



OKLAHOMA STATE UNIVERSITY

**Purebred Beef Cattle Center**

# *Cowboy Classic*

**43rd Annual Production Sale**

*Sunday, April 3, 2022*

1:00 P.M., STILLWATER, OKLAHOMA



*Our 2022 Cattleman's Congress Grand Champion Pen of Three Angus Heifers sell!*



OKLAHOMA STATE UNIVERSITY



# 2022 Cowboy Classic

1:00 p.m. CDT

*Sunday, April 3rd*

Stillwater, Okla.

**23 FEMALE LOTS • 39 READY-FOR-SERVICE BULLS**

**ANGUS • HERFORD • SIMMENTAL**

*Spring Yearling Donor Prospects...Spring Cow/Calf Pairs...Fancy Fall Show Heifer Prospects*

*Fall Long Yearling & Spring Yearling Bulls...also 10 Black Baldy First-calf Heifer Pairs*

**FEATURING OUR 2022 CATTLEMEN'S CONGRESS GRAND CHAMPION PEN OF THREE HEIFERS...AND MORE!**



*lot 1*

**OSU Blackcap 1123**



*lot 2A*

**OSU Queen 1110**



*lot 2B*

**OSU Queen 1121**



*lot 3*

**OSU Empress 1135**



*lot 4A*

**OSU Empress 1112**



*lot 4B*

**OSU Empress 1114**



**PUREBRED BEEF CATTLE CENTER**

Mailing address: 109 Animal Science, Stillwater, OK 74078

**[beefcenter.ansi.okstate.edu](http://beefcenter.ansi.okstate.edu)**

Jeremy Leister, Manager

(405) 714-0557 • [leister@okstate.edu](mailto:leister@okstate.edu)

Dr. Mark Johnson, Assoc. Professor (405) 880-1902

VISITORS ALWAYS WELCOME...LOCATED 3 MILES WEST OF STILLWATER ON NORTH SIDE OF HWY. 51



# Welcome to OSU



DEPARTMENT OF  
**ANIMAL & FOOD SCIENCES**  
College of Agriculture

109 Animal Science Building  
Stillwater, OK 74078  
O | (405) 744-6065  
[beefcenter.okstate.edu](http://beefcenter.okstate.edu)

Dear Friends and Fellow Cattlemen:

On behalf of the OSU Purebred Beef Cattle Center and our Department of Animal Science, welcome to the 43rd Annual OSU Cowboy Classic Sale. We look forward to showing you this outstanding sale offering! As always, we are very excited about the sale and feel we have an outstanding group of cattle to offer. **We hope you can join us at the Farm Credit Associations of Oklahoma and CoBank Purebred Beef Cattle Sale Facility on Sunday, April 3, 2022 at 1 p.m.**

This sale features the **2022 Cattlemen's Congress Champion Pen of 3 Angus Heifers**. These females include daughters of Musgrave 316 Stunner, Basin Payweight Plus 6048 and EXAR Grenade. Other females highlighted are the young, productive two-year-old spring pairs, whose calves are sired by some of the most popular AI sires to date and have been registered. Most of the spring calves have their genomically enhanced EPDs printed in the catalog, and those who don't will be available by sale day. Also offered is a set of Angus fall halter heifer prospects comparable to any you can find!

In our opinion, this is an outstanding set of bulls being offered! They are sound, powerful and problem free while offering reliable genetics that will add value to your cow herd and keep your operation profitable. All bulls sell backed by our breeding soundness guarantee.

You will notice most all of the Angus cattle in the offering and the Hereford bulls have been DNA tested and accordingly sell with genomically enhanced Expected Progeny Differences (GE-EPDs). We strongly believe this technology offers you increased confidence as a buyer that the genetics you are investing in will meet your expectations. GE-EPDs are the most accurate genetic predictions possible for non-parent yearling bulls and heifers.

We would like to thank all of the student employees for the efforts they put in all year at the Purebred Beef Center. We appreciate all of our loyal customers past and present and the support they give to the Purebred Beef Center. They make it possible to sustain this operation so that we can continue to offer OSU students the unique educational experiences that create greater demand for their services upon graduation.

At OSU, we remain committed to customer satisfaction and believe this offering can be of benefit to any operation. Please call Mark or Jeremy if we can be of service to you or answer any questions you may have about these cattle.

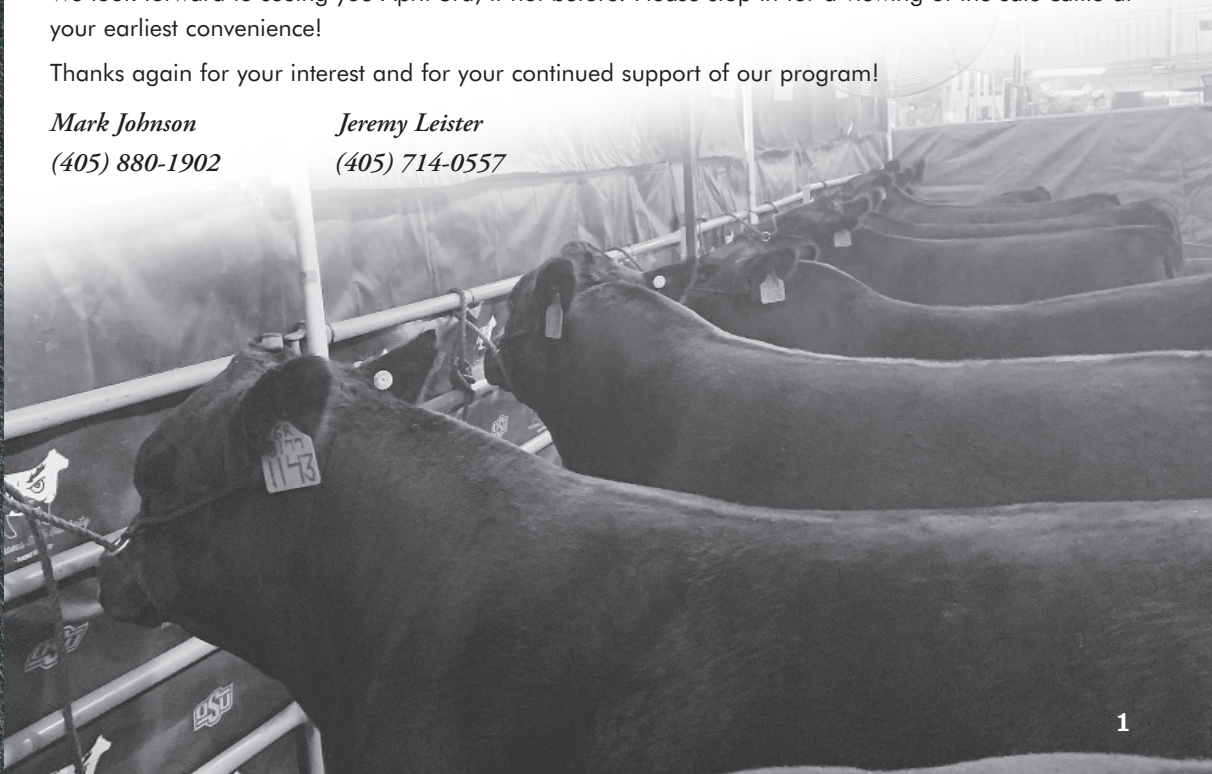
We look forward to seeing you April 3rd, if not before. Please stop in for a viewing of the sale cattle at your earliest convenience!

Thanks again for your interest and for your continued support of our program!

*Mark Johnson*  
(405) 880-1902

*Jeremy Leister*  
(405) 714-0557

Videos online  
prior to sale day!





Oklahoma State University  
Animal Science Alumni Association  
*Animal Science  
Weekend*

April 1-3, 2022 | Stillwater, Oklahoma

**Join the ASAA in supporting animal and food science students through the 2022 Online Scholarship Auction!**

Auction Items include artwork, OSU memorabilia, steaks, and so much more! To view items, bid, and to register for the 2022 ASAA Gala Reunion and Scholarship Auction, please visit  
[www.ASAAgala.givesmart.com!](http://www.ASAAgala.givesmart.com!)



ANIMAL SCIENCE  
ALUMNI ASSOCIATION

# Events Schedule

## Saturday, April 2

- |            |   |   |
|------------|---|---|
| 11:30 a.m. | <b>ASAA General Membership Meeting and Lunch</b><br>All alumni welcome, lunch sponsored by Livestock Nutrition Center   | <i>Totusek Arena</i>                    |
| 2:00 p.m.  | <b>100+ Meat Science Celebration FAPC Tour</b>  | <i>FAPC</i>                             |
| 5:00 p.m.  | <b>ASAA Gala Reunion</b><br>Doors open for social hour, cash bar and meal   | <i>OSU ConocoPhillips Alumni Center</i> |
| 5:30 p.m.  | <b>Photos of 50-year Teams</b>  |   |
| 6:00 p.m.  | <b>ASAA Gala Reunion Program</b><br>Reunion of 2012, 1997 & 1972 animal science graduates, 50-year 1972 judging teams and Hall of Fame Chairback Recipient - Dr. Tom Carr   | <i>OSU ConocoPhillips Alumni Center</i> |
|            | Online Scholarship Auction-live, spotlight & silent items<br>Auction bidding available online at <a href="http://www.ASAAgala.givesmart.com">www.ASAAgala.givesmart.com</a> |   |

## Sunday, April 3

- |           |  |                             |
|-----------|--|-----------------------------|
| 1:00 p.m. | <b>43rd Annual Cowboy Classic Sale</b> | <i>Purebred Beef Center</i> |
|-----------|--|-----------------------------|



# 2022 COWBOY CLASSIC SALE INFORMATION



## Invited Guests and Representatives

**Dr. Jerry Fitch and Dr. Chris Richards** Interim Heads of Department of Animal Science, Oklahoma State University

**Dr. Don Wagner** Emeritus Head of Department of Animal Science, Oklahoma State University

**Dr. Barry Pollard** Director, American Angus Assn.

**Jarold Callahan** Executive Director, Oklahoma Angus Assn.

**Jim Strate** President, Oklahoma Angus Assn.

**Richie Oakes** President, Oklahoma Hereford Assn.

**Jeff White** President, Oklahoma Simmental/Simbrah Assn.

**Byron Yeoman** President, Oklahoma Cattlemen's Assn.

**Michael Kelsey** Executive Vice President, Oklahoma Cattlemen's Assn.

## Sale Staff

**Matt Sims** Auctioneer (405) 641-6081

**Jeff Mafi** Angus Journal (816) 344-4266

**Doug Paul** The Stock Exchange (405) 840-3915; c 820-3982

**Chisolm Kinder** Oklahoma Cowman (405) 235-4391; c 747-4683

**Delvin Heldermon** Heldermon Enterprises (405) 205-1116

**Dustin Layton** Layton Auction Services, LLC (405) 464-2455

**Juston Stelzer** Stelzer Services (817) 992-7059

## Absentee Bids

If you would like to place a bid on any lot but cannot attend the sale, please contact Jeremy Leister, Mark Johnson or any member of the sale staff. Live bidding will also be available for registered bidders via [cci.live](http://cci.live). See page 39 for instructions.



**Complimentary lunch will be served sale day.**

**Please be our guest!**

## Terms of Sale

CASH. Each animal will be sold to the highest bidder. The auctioneer in charge will settle any dispute as to bids. All cattle are to be paid for by the purchaser during or immediately following the sale and will not be released until after settlement has been made. Cattle will not be transferred until paid for in full.

## OSU Bursar's Office Policy and Procedures

There will be a finance charge computed at a periodic monthly rate of 1.5% per month, or an APR of 19.56%, on any unpaid balance. All accounts with an unpaid balance will be assessed a minimum finance charge of \$.50 per month. Bursar accounts are assessed a finance charge after 30 days past the due date on any remaining unpaid balance that has been billed.

## Registration Certificates

The animals will be transferred to the buyer at the seller's expense. Each buyer must be sure to give the sale clerk the proper name and address for making transfers. All calves born before the sale have been registered by the seller; proper breeding statements will be signed by the seller for the buyer to use in registering calves born after the sale.

## Motel Accommodations

Several motels are available in Stillwater. Two of the more conveniently located are the LaQuinta Inn & Suites, (405) 564-0599, and the Holiday Inn Express, (405) 372-2445.

## Air Transportation

Stillwater Municipal Airport has complete services and facilities to accommodate any size aircraft. Major terminals at Oklahoma City and Tulsa are approximately 75 miles from Stillwater and are served by many major airlines.

## Acknowledgements

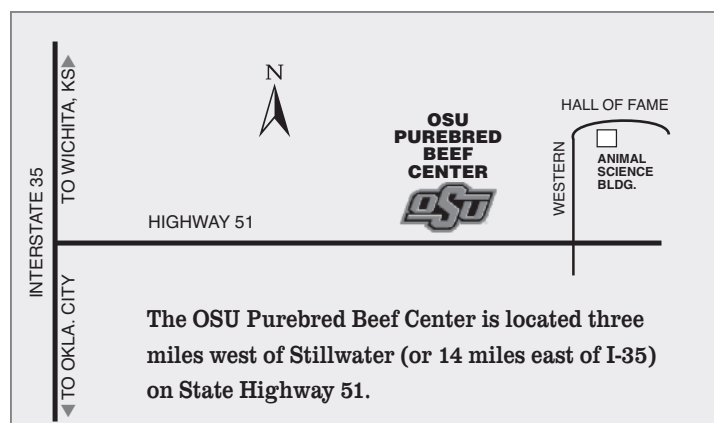
**Embryo Transplant Services** Four Corners Embryo Transfer, Langley, OK

**Veterinarian** White Vet Services, Cushing, OK (918) 225-8061

**Ultrasound** Chad Gordon, Ultrasound Technologies (580) 678-1918

**Sale Cattle Photography and Videos** Ky Stierwalt (580) 302-3005

**Sale Advertising and Catalog** Southwest TypeStyles (405) 317-1743



## Herd Health

The health of the cattle is excellent. Health papers will be furnished for interstate shipment. OSU is a Brucellosis-Certified and Tuberculosis-Accredited herd. All bulls have received a physical examination consisting of scrotal circumference measurement, rectal palpation and penis and prepuce examination and were semen tested March 15, 2022. We practice an extensive herd health program at OSU. Prior to weaning, calves receive two rounds of Express FP5, Caliber 7, Covexin 8, Presponse HM and Cydectin Pour-On; after weaning, they are de-wormed with Ivomec Injectable. Breeding-age females receive Express FP3 VL5, Lepto 5 and Caliber 7 and are poured with Cydectin. Bulls are also poured with Cydectin as yearlings.

## Trucking

We work with many reputable trucking companies and will be happy to assist you with making arrangements for the delivery of your purchases. This is all done at the expense of the buyer. We recommend that insurance be obtained on lots purchased.

**All persons who attend the sale do so at their own risk. Neither Oklahoma State University nor any person connected with the sale assumes liability, legal or otherwise, for accidents or loss of property. Announcements made sale day from the auction block will supercede all printed material. We reserve the right to withdraw any sale lot not meeting our specifications prior to sale time.**





# COWBOY CLASSIC CATALOG INFORMATION

## Expected Progeny Differences

EPDs are included for the animals offered in this sale. EPDs are expressed as plus (+) or minus (-) units that measure that trait. For example, birth weight, weaning weight and yearling weight are given in pounds. Milk EPDs are expressed as pounds of weaning weight and should be considered only in cases when females will be kept as replacements.

Note that the EPDs reported on the Angus and Hereford lots include results from genomic, or DNA, tests. GE-EPDs offer increased predictability and decreased risk for young, unproven animals due to enhanced accuracy.

The following table is designed to serve as a reference for comparing seedstock of a particular breed. Because most seedstock are selected at a young age, the most useful standard of comparison is often the average of other young animals within the breed. **This table cannot be used to compare EPDs of the different breeds.**

### SPRING 2022 BREED AVERAGE EPDs:

	CED	BW	WW	YW	SC	Milk	Marb	RE
Angus Non-Parent Cows	+ 6	+1.3	+59	+104	+.80	+26	+.63	+.62
Angus Current Dams	+ 6	+1.4	+54	+ 94	+.74	+26	+.51	+.49
Angus Non-Parent Bulls	+ 6	+1.2	+59	+105	+.83	+26	+.60	+.60
Hereford 2020/21 Calves	+2.7	+2.8	+54	+ 87	+1.0	+26	+.11	+.41
Purebred Simmental	+10.7	+1.7	+77	+115		+23	+.11	+.87

## Ultrasound Measurements of Body Composition

Ultrasound measurements were taken on the yearling females and all of the bulls. We are including this information in addition to each animal's ultrasound-based body composition EPDs. Data included are for:

**Marbling, or Intramuscular Fat (%IMF)**, is measured as a percent of fat in the ribeye muscle at the 12–13th rib interface. This measurement is adjusted to 365 days of age. Intramuscular fat percentage should only be used for in-herd comparisons, as feeding conditions may vary. Heritability for marbling is moderate. Beef Quality Grades are based largely on USDA Graders' subjective evaluation of the degree of marbling in the ribeye. Selection for increased marbling should improve beef quality grades.

Furthermore, the genetic correlation between marbling and fat thickness is low, meaning breeders can select for increased marbling without also increasing fat thickness. The percent intramuscular fat figures can be converted into quality grades. For example: 3% indicates USDA Select; 4% indicates USDA Low Choice; 7% indicates USDA High Choice, 9% indicates USDA Prime.

In general, steer progeny should have about 2% more intramuscular fat than their sires. Therefore, a yearling bull with 3% intramuscular fat should sire steers with approximately 5% intramuscular fat.

**Ribeye Area (RE or REA)** is measured in square inches. REA is highly and positively correlated with percent retail yield. The heritability of this trait is moderately high, indicating that selection for improvement of REA should be successful. According to National Beef Quality Audits conducted by NCBA, carcass REAs from 11 to 14 square inches are most desirable. REA is adjusted to 365 days of age. A suggestion to remember if using ultrasound REA measures in selection programs to improve muscling: evaluate the ultrasound REA relative to hundred lbs. of live weight. For example, a bull with a 14.4 square inch REA weighing 1200 lbs. (14.4 divided by 12) would have a REA/live cwt. ratio of 1.2. While a ratio of 1.0 is considered an acceptable degree of muscling, breeders selecting for improved muscling should select bulls with at least a 1.1 or above REA/live cwt ratio. A higher REA EPD would indicate more muscling.



Dollar value indexes, or **\$Values**, are a tool used to select for several traits at once based on a specific breeding objective. An economic index approach takes into account genetic and economic values as well as the relationships between traits to select for profit.

## American Angus Association \$Value Indexes

**Maternal Weaned Calf Value (\$M)**, an index expressed in dollars per head, predicts profitability differences in progeny due to genetics from conception to weaning. \$M is built off of a self-replacing herd model where commercial cattlemen replace 25% of their breeding females in the first generation and 20% in subsequent generations. Remaining cull females and all male progeny are sold as feeder calves. Increased selection pressure on \$M aims to decrease overall mature cow size and improve foot structure and fertility while maintaining weaning weights consistent with today's production.

**Weaned Calf Value (\$W)**, an index expressed in dollars per head, provides the expected difference in future progeny preweaning performance from birth to weaning. \$W assumes that producers retain 20% of their female progeny for replacements and sell the rest of their cull female and male progeny as feeder calves. Over time, increased selection pressure on \$W will increase weaning and maternal milk traits while also continuing to increase mature cow size.

**Feedlot Value (\$F)**, an index expressed in dollars per head, is the expected average difference in future progeny performance for postweaning merit compared to progeny of other sires. The underlying objective assumes commercial producers will retain ownership of cattle through the feedlot phase and sell fed cattle on a carcass weight basis with no considerations of premiums or discounts for quality and yield grade.

**Grid Value (\$G)**, an index expressed in dollars per carcass, is the expected average difference in future progeny performance for carcass grid merit, including quality and yield grade attributes, compared to progeny of other sires.

**Beef Value (\$B)**, an index expressed in dollars per carcass, facilitates simultaneous multi-trait genetic selection for feedlot and carcass merit. \$B represents the expected average differences in the progeny post-weaning performance and carcass value compared to progeny of other sires. This index assumes commercial producers wean all male and female progeny, retain ownership of these animals through the feedlot phase and market these animals on a quality-based carcass grid.

**Combined Value (\$C)**, an index expressed in dollars per head, includes all traits that make up both \$M and \$B with the objective that commercial producers will replace 20% of their breeding females per year with replacement heifers retained within their own herd. The remaining cull heifer and steer progeny are then assumed to be sent to the feedlot where the producers retain ownership of those cattle and eventually sell them on a quality-based carcass merit grid.

### EPDS DIRECTLY INCORPORATED INTO EACH \$VALUE

	MATERNAL		TERMINAL			
TRAIT	\$M	\$W	\$F	\$G	\$B	\$C
CED	✓					✓
BW		✓				
WW	✓	✓				✓
YW			✓		✓	✓
CEM	✓					✓
Milk	✓	✓				✓
MW	✓	✓				✓
DOC	✓					✓
HP	✓					✓
Claw	✓					✓
Angle	✓					✓
DMI			✓		✓	✓
CW			✓	✓	✓	✓
RE				✓	✓	✓
Marb				✓	✓	✓
Fat				✓	✓	✓





# Angus Spring Yearling Donor Prospects

lots 1-5



Lot 1 OSU Blackcap 1123



1

## OSU Blackcap 1123

CALVED: 1/7/21 • AAA: \*19943026 • TAT.: 1123

# + Basin Payweight 1682  
**Basin Payweight Plus 6048**  
 + EXAR Royal Lass 2810  
 ANGUS COW  
 OSU Final Answer 4225  
**OSU Blackcap 9174**  
 OSU Blackcap 7180

# + Basin Payweight 006S  
 21AR O Lass 7017  
 #Connealy Consensus 7229  
 + EXAR Royal Lass 1067  
 #S A V Final Answer 0035  
 OSU Jilt 2137  
 # + Quaker Hill Rampage 0A36  
 + OSU Blackcap 4107

\$M	+63
\$W	+88
\$F	+114
\$G	+52
\$B	+167
\$C	+280

CED	BW	WW	YW	SC	DOC	MILK	MARB	RE	FAT	TEND
+15	+0.7	+81	+156	+1.26	+20	+33	+69	+71	79	58

*Cattlemen's Congress Champion Pen Member*

A tremendous opportunity sells with the featured Lot 1 female of the 2022 Cowboy Classic. This daughter of the now-deceased Payweight Plus 6048 is a refreshing blend of a robust genomic profile and captivating phenotype! 1123 offers a unique pedigree to build a herd around. She posted a BW ratio of 96 with a YW ratio of 117 and combines those figures with impressive scan ratios of 105 for IMF and 130 for REA.

- BW 64 lbs., ADJ. WW 635 lbs., ADJ. YW 1141 lbs.
- Ultrasound: ADJ. %IMF 5.66, ADJ. REA 13.9 sq. in.
- Breeding information available sale day.





# SPRING YEARLING DONOR CANDIDATE

angus



Lot 2A OSU Queen 1110

**2A**

**OSU Queen 1110**

CALVED: 1/3/21 • AAA: +\*19944504 • TAL: 1110



+ LD Capitalist 316

**Musgrave 316 Stunner**

#MCATL Blackbird 831-1378

ANGUS COW

#HA Cowboy Up 5405

+ **OSU Queen 8155**

OSU Queen 0168



#Connealy Capitalist 028

LD Dixie Erica 2053

#MCATL Pure Product 903-55

MCATL Blackbird 1378-573

HA Outside 3008

#HA Blackcap Lady 1602

#+ S A V Bismarck 5682

O S U Queenie 2187

\$M
+51
\$W
+73
\$F
+110
\$G
+47
\$B
+157
\$C
+255



CED	BW	WW	YW	SC	DOC	MILK	MARB	RE	FAT	TEND
+3	+3.1	+84	+144	+1.49	+14	+19	+.68	+.65		
Genomic	CED	BW	WW	YW	DMI	YH	SC	DOC	HP	CEM
87	93	9	9	88	77	9	73	41	44	99
										10
										9
										15
										46
										27
										97
										60

*Cattlemen's Congress Champion Pen Member*

The Stunner 316 daughters do not fall short of their namesake! This female is one of the most unique individuals that we have offered in some time. She was the lead female in the 2022 Champion Pen of 3 Angus Heifers at Cattlemen's Congress. 1110 is built so nice from a phenotypic standpoint! Long necked and smooth shouldered with an abundance of shape and dimension. A sure footed female that will have plenty of versatility on breeding options. The granddam of Lots 2A and 2B is OSU Queen 0168, who sold in 2016 for \$15,500 and has generated an abundance of revenue over the past several years.

- BW 73 lbs., ADJ. WW 681 lbs., ADJ. YW 1118 lbs.
- Ultrasound: ADJ. %IMF 4.43, ADJ. REA 12.4 sq. in.
- Breeding information available sale day.

**Full sisters sell as Lots 2A & 2B**





Lot 2B OSU Queen 1121

**2B****OSU Queen 1121**

CALVED: 1/6/21 • AAA: +\*19944505 • TAT: 1121



+ LD Capitalist 316

**Musgrave 316 Stunner**

#MCATL Blackbird 831-1378

ANGUS COW

#HA Cowboy Up 5405

+ **OSU Queen 8155**

OSU Queen 0168

#Connealy Capitalist 028

LD Dixie Erica 2053

#MCATL Pure Product 903-55

MCATL Blackbird 1378-573

HA Outside 3008

#HA Blackcap Lady 1602

# + S A V Bismarck 5682

O S U Queenie 2187

\$M
+53
\$W
+77
\$F
+119
\$G
+33
\$B
+152
\$C
+250

CED	BW	WW	YW	DMI	YH	SC	DOC	HP	CEM	MILK	MW	MH	CW	MARB	RE	FAT	TEND
+12	+0.9	+71	+121			+60		+11	+26		+45		+46				

CED	BW	WW	YW	DMI	YH	SC	DOC	HP	CEM	MILK	MW	MH	CW	MARB	RE	FAT	TEND
10	26	37	50	31	69	57	82	35	55	78	38	54	14	61	71	100	31

Another captivating daughter of Stunner 316! I believe these females are going to make beautiful cows that produce well and have some longevity in any herd. This female was also a member of the 2022 Champion Pen of 3 Angus Heifers.

- BW 70 lbs., ADJ. WW 706 lbs., ADJ. YW 1052 lbs.
- Ultrasound: ADJ. %IMF 4.47, ADJ. REA 12.4 sq. in.
- Breeding information available sale day.

*Cattlemen's Congress Champion Pen Member*

Maternal granddam of Lots 2A &amp; 2B OSU Queen 0168





# SPRING YEARLING DONOR CANDIDATE

angus



Lot 3 OSU Empress 1135

3

## OSU Empress 1135

CALVED: 1/11/21 • AAA: \*19943027 • TAL: 1135



Casino Bomber N33

**EXAR Grenade 9152B**

EXAR Merle 7441

ANGUS COW

Basin Payweight Plus 6048

**OSU Empress 9101**

OSU Empress 4184



# + KM Broken Bow 002

# Casino Annie K48

# Sitz Top Game 561X

EXAR Merle 2550

# + Basin Payweight 1682

+ EXAR Royal Lass 2810

+ OSU Class Act

+ OSU Empress 2138

\$M

+89

\$W

+93

\$F

+110

\$G

+47

\$B

+158

\$C

+294

CED	BW	WW	YW	SC	DOC	MILK	MARB	RE
+8	+1.7	+89	+145	+.06	+26	+26	+.55	+.71

CED	BW	WW	YW	DMI	YH	SC	DOC	HP	CEM	MILK	MW	MH	CW	MARB	RE	FAT	TEND
73	84	3	28	77	28	82	15	1	11	56	16	14	12	47	44	46	77

The Grenade progeny have been some of my favorites here at the PBC! Customers will see an abundance of these calves in the coming years of sales, and 1135 is the perfect example of why. She is a well-balanced, broody made female that reads with a genetic script of relevance! This female is impressive in her \$M figure at +89 and ranks in the top 1% of the breed for HP EPD.

• BW 70 lbs., ADJ. WW 745 lbs., ADJ. YW 1091 lbs.

Ultrasound: ADJ. %IMF 6.30, ADJ. REA 12.3 sq. in.

• Breeding information available sale day.

*Cattlemen's Congress Alternate Pen Member*



Dam of Lot 3 OSU Empress 9101





Lot 4A OSU Empress 1112



Dam of Lots 4A & 4B OSU Empress 8143

## Full sisters sell as Lots 4A & 4B

Lot 4B  
OSU Empress 1114



# 4A




## OSU Empress 1112

CALVED: 1/3/21 • AAA: +\*19943004 • TAT: 1112

+ G A R Ashland  
**G A R Home Town**  
+ Chair Rock Sure Fire 6095  
ANGUS COW  
#Connealy Confidence Plus  
+ **OSU Empress 8143**  
+ OSU Empress 5102

G A R Early Bird  
+ Chair Rock Ambush 1018  
# + G A R Sure Fire  
+ Chair Rock Progress 3005  
#Connealy Confidence 0100  
Elbanna of Conanga 1209  
# + S A V Resource 1441  
+ OSU Empress 2114

\$M	+82
\$W	+78
\$F	+71
\$G	+96
\$B	+167
\$C	+299

+ OSU Empress 5102										+ OSU Empress 2114							\$B	
CED										BW	WW	YW	SC	DOC	MILK	MARB	RE	\$C
+14										-1.0	+65	+112	+88	+21	+27	+1.46	+1.25	+167
Genomic	CED	BW	WW	YW	DMI	YH	SC	DOC	HP	CEM	MILK	MW	MH	CW	MARB	RE	FAT	TEND
	3	7	65	50	57	100	38	28	23	99	68	76	98	86	1	4	23	77

Superior brood cow prospect that is genuine in her base width and body shape. This female is exquisite from a moderation standpoint and has the look of the easy keeping, efficient kind. She scanned with over 8% IMF and an adjusted REA of over 15 inches! She combines this with a \$M of +82! This is a unique breeding piece that will fit many facets of "the Business Breed."

- BW 62 lbs., ADJ. WW 590 lbs., ADJ. YW 982 lbs.
- Ultrasound: ADJ. %IMF 8.43, ADJ. REA 15.2 sq. in.
- Breeding information available sale day.

# 4B




## OSU Empress 1114

CALVED: 1/4/21 • AAA: +\*19943005 • TAT: 1114

+ G A R Ashland  
**G A R Home Town**  
+ Chair Rock Sure Fire 6095  
ANGUS COW  
#Connealy Confidence Plus  
+ **OSU Empress 8143**  
+ OSU Empress 5102

G A R Early Bird  
+ Chair Rock Ambush 1018  
# + G A R Sure Fire  
+ Chair Rock Progress 3005  
#Connealy Confidence 0100  
Elbanna of Conanga 1209  
# + S A V Resource 1441  
+ OSU Empress 2114

\$M	+71
\$W	+76
\$F	+92
\$G	+69
\$B	+161
\$C	+280

+ OSU Empress 5102										+ OSU Empress 2114												\$B					
																						+161					
CED										BW		WW		YW		SC		DOC		MILK		MARB		RE		\$C	
+15										-0.9		+65		+120		+70		+11		+28		+96		+1.04		+280	
Genomic	CED	BW	WW	YW	DMI	YH	SC	DOC	HP	CEM	MILK	MW	MH	CW	MARB	RE	FAT	TEND									
	2	6	69	28	52	92	44	65	38	38	53	65	93	59	28	3	25	72									

Much like her full sister right next to her, 1114 is exceptional from a rib shape and power perspective. These females' dam was selected for \$13,000 in the 2020 Cowboy Classic online sale and is doing a fantastic job in Canada. She also scanned impressively with over 7% IMF.

- BW 65 lbs., ADJ. WW 659 lbs., ADJ. YW 1013 lbs.
- Ultrasound: ADJ. %IMF 7.43, ADJ. REA 12.0 sq. in.
- Breeding information available sale day.





# SPRING YEARLING DONOR CANDIDATE

angus



Lot 5 OSU QHF Empress 1169



Dam of Lot 5 OSU Empress 8160

## 5

**G A R Home Town**  
+ Chair Rock Sure Fire 6095

ANGUS COW

3F Epic 4631  
+ **OSU Empress 8160**  
OSU Empress 5122

**OSU QHF Empress 1169**

CALVED: 3/6/21 • AAA: +\*19992282 • TAL: 1169

G A R Early Bird  
+ Chair Rock Ambush 1018  
# + G A R Sure Fire  
+ Chair Rock Progress 3005

Varilek Product 2010 04  
Zebo Queen 1072  
# + S A V Resource 1441  
OSU Empress 6154

\$M	+48
\$W	+80
\$F	+129
\$G	+81
\$B	+210
\$C	+320

CED	BW	WW	YW	SC	DOC	MILK	MARB	RE
+14	-1.8	+64	+129	+96	+8	+38	+1.25	+84

CED	BW	WW	YW	DMI	YH	SC	DOC	HP	CEM	MILK	MW	MH	CW	MARB	RE	FAT	TEND
3	6	71	6	60	71	37	76	42	1	7	32	46	9	5	19	20	48

Here is the top \$C female in the sale! Impressive for her length and structural integrity, this female is backed by one of the most productive young donor prospects here at the PBC. Another Home Town daughter that scanned over 8% for IMF. 1169 is a flush sister to the outstanding Lot 24 lead bull selling.

- BW 77 lbs., ADJ. WW 681 lbs., ADJ. YW 1012 lbs.
- Ultrasound: ADJ. %IMF 8.60, ADJ. REA 11.2 sq. in.
- Breeding information available sale day.

Full brother to Lot 5 OSU Home Town 1170...sells as feature Lot 24

Established in the 1920s, the OSU Animal Science purebred cow herd has earned nationwide acceptance as a source of genetically superior seedstock while serving primarily as a teaching tool for students at OSU and for 4-H and FFA youth throughout Oklahoma as well as the entire nation. It is our privilege to contribute to the outstanding quality of students and alumni from OSU's Department of Animal Science while developing one of America's most respected cow herds.

*Thank you for your powerful support!*

10

43rd ANNUAL COWBOY CLASSIC • 1 P.M., SUNDAY, APRIL 3, 2022





## Angus Spring 2-year-old Pairs

lots 6-11



Dam of Lot 6 OSU Lady 7130

Lot 6 OSU Lady 0114

6

## OSU Lady 0114

CALVED: 1/4/20 • AAA: +\*19705871 • TAL: 0114

# + Basin Payweight 1682  
**+ V A R Power Play 7018**  
 + Sandpoint Blackbird 8809

ANGUS COW

# + PVF Insight 0129

**OSU Lady 7130**

OSU Lady 5112

# + Basin Payweight 006S  
 21AR O Lass 7017  
 #Connealy Onward  
 + Riverbend Blackbird 4301  
 #S A V Brilliance 8077  
 + PVF Missie 790  
 #Barstow Cash  
 OSU Lady 2179

CED	BW	WW	YW	DMI	YH	SC	DOC	HP	CEM	MILK	MW	MH	CW	MARB	RE	FAT	TEND
+6	+2.1	+77	+132	+26	+26	+28	+33	+81	+133	+245							

CED	BW	WW	YW	DMI	YH	SC	DOC	HP	CEM	MILK	MW	MH	CW	MARB	RE	FAT	TEND
28	44	16	17	79	52	87	13	36	32	47	10	54	15	79	23	75	66

A nice Power Play daughter that excels in terms of udder quality, rib shape and structural integrity. At the PBC, we are trying to identify new cow families to blend with the power of the stable ones that are established, and this female was one that quickly surfaced to the top. She has a tremendous GAR Home Town heifer calf at side.

• Breeding information available sale day.

6A

## OSU Lady 2132

CALVED: 1/7/22 • AAA: \*20250146 • TAL: 2132

# + G A R Ashland  
**G A R Home Town**  
 + Chair Rock Sure Fire 6095

ANGUS COW

# + V A R Power Play 7018

**+ OSU Lady 0114**

OSU Lady 7130

G A R Early Bird  
 + Chair Rock Ambush 1018  
 # + G A R Sure Fire  
 + Chair Rock Progress 3005  
 # + Basin Payweight 1682  
 + Sandpoint Blackbird 8809  
 # + PVF Insight 0129  
 OSU Lady 5112

CED	BW	WW	YW	DMI	YH	SC	DOC	HP	CEM	MILK	MW	MH	CW	MARB	RE	FAT	TEND
+9	+1.5	+73	+126	+1.18	+20	+20	+20	+1.01	+133	+245							

CED	BW	WW	YW	DMI	YH	SC	DOC	HP	CEM	MILK	MW	MH	CW	MARB	RE	FAT	TEND
17	35	22	21	43	41	24	31	40	21	82	20	41	9	27	4	1	86

Big time female prospect sired by the popular GAR Home Town. Ranks in the top 10% for \$G, \$B, and \$C.

• BW 62 lbs.





# 2-YEAR-OLD SPRING PAIR

angus



Lot 7 OSU Jilt 0106



Dam of Lot 7 OSU Jilt 7142

7



## OSU Jilt 0106

CALVED: 1/2/20 • AAA: +\*19643738 • TAT: 0106

#Jindra Acclaim  
+ Stevenson Big League 70749  
RL 9061 Birdie 3102

ANGUS COW

#Barstow Cash  
+ OSU Jilt 7142  
+ OSU Jilt 0105



Jindra 3rd Dimension  
+ Jindra Blackbird Lassie 1111  
#S A V Thunderbird 9061  
#RL 0145 Image 102  
#Sitz Dash 10277  
Barstow Queen W16  
#EXAR Tinfelist T011  
#O S U Jilt 7143

\$M	+64
\$W	+59
\$F	+96
\$G	+32
\$B	+128
\$C	+230



CED	BW	WW	YW	SC	DOC	MILK	MARB	RE	FAT	TEND
+2	+3.5	+71	+120	+71	+11	+18	+36	+32	63	6

The Big League daughters are tremendous for power! Both of these females are impressive from a foot and bone standpoint. They are wide pinned and heavy muscled. They stem from a cow that was a member of OSU's 2018 NWSS Champion Pen of 3 Heifers sired by Barstow Cash.

• Breeding information available sale day.

7A



## OSU Jilt 2128

CALVED: 1/7/22 • AAA: \*20250113 • TAT: 2128

+ LD Capitalist 316  
Musgrave 316 Exclusive  
Musgrave Prim Lassie 163-386

ANGUS COW

+ Stevenson Big League 70749  
+ OSU Jilt 0106  
+ OSU Jilt 7142



#Connealy Capitalist 028  
LD Dixie Erica 2053  
#Musgrave Foundation  
#SCR Prim Lassie 80634

#Jindra Acclaim  
RL 9061 Birdie 3102  
#Barstow Cash  
+ OSU Jilt 0105

\$M	+64
\$W	+63
\$F	+79
\$G	+37
\$B	+116
\$C	+214

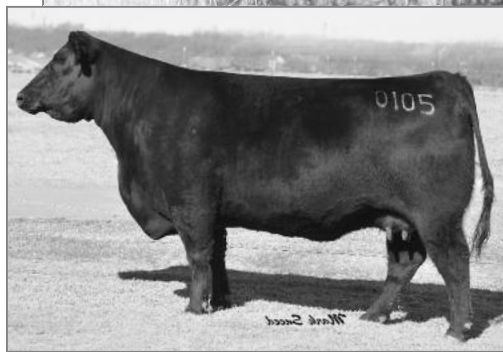


CED	BW	WW	YW	SC	DOC	MILK	MARB	RE	FAT	TEND
+8	+0.1	+66	+115	+28	+11	+18	+49	+40	84	6

The Musgrave 316 Exclusives have a really nice look and pattern with tremendous replacement value.

• BW 57 lbs.





Lot 8 OSU Jilt 0111

Dam of Lot 8 OSU Jilt 0105

8

## OSU Jilt 0111

CALVED: 1/4/20 • AAA: +\*19643749 • TAL: 0111



# + Basin Payweight 1682  
+ Deer Valley Wall Street  
+ Deer Valley Rita 36113

ANGUS COW

# EXAR Titlelist T011  
+ OSU Jilt 0105  
# O S U Jilt 7143



CED	BW	WW	YW	SC	DOC	MILK	MARB	RE	\$M
+3	+1.8	+41	+77	-.41	+12	+23	+73	+.22	+54
FAT	TEND	HP	CW	MARB	RE	\$G	\$F	\$B	\$C
67	55	93	89	6	80	99	63	42	65
54	78	64	81	49	86	93	53		

One of the first Deer Valley Wall Street daughters to be in production here at OSU, this female is moderate and efficient in her type and kind. She stems from one of my favorite cows here at the PBC. OSU Jilt 0105 was an integral part in moving our breeding program in the progressive direction of outstanding phenotype and a solid genomic profile. 0111's brothers averaged \$8,000 in the 2021 Cowboy Classic. This two-year-old has an outstanding bull calf sired by EXAR Grenade 9152B.

• Breeding information available sale day.

8A

## OSU Grenade 2143

CALVED: 1/27/22 • AAA: \*20271318 • TAL: 2143



Casino Bomber N33  
EXAR Grenade 9152B  
EXAR Merle 7441

ANGUS BULL

+ Deer Valley Wall Street  
+ OSU Jilt 0111  
+ OSU Jilt 0105



CED	BW	WW	YW	SC	DOC	MILK	MARB	RE	\$M
+1	+1.9	+80	+135	+.49	+22	+23	+.69	+.60	+95
FAT	TEND	HP	CW	MARB	RE	\$G	\$F	\$B	\$C
37	33	13	38	66	55	46	18	1	16
79	23	41	11	46	49	60			

This end of January bull calf is impressive for sheer dimension. His GE-EPDs give him a top 1% rank for \$M, top 2% rank for HP, and top 4% rank for \$C.

• BW 85 lbs.





# 2-YEAR-OLD SPRING PAIRS

angus

## Full sisters sell as Lots 9 & 10



Dam of Lots 9 & 10 OSU Empress 7148



Lot 10 OSU Empress 0146

9

### OSU Empress 0145

CALVED: 2/24/20 • AAA: +\*19681590 • TATL: 0145

<b>+ Baldridge Colonel C251</b> <b>+ EXAR Rolex 8709B</b> <b>+ EXAR Royal Lass 1067</b> <b>ANGUS COW</b> <b>#Barstow Cash</b> <b>OSU Empress 7148</b> <b>+ OSU Empress 5102</b>														<b>+ Baldridge Xpand X743</b> <b>Baldrige Isabel Y69</b> <b>#EXAR 263C</b> <b>BR Royal Lass 19-132</b> <b>#Sitz Dash 10277</b> <b>Barstow Queen W16</b> <b># + S A V Resource 1441</b> <b>+ OSU Empress 2114</b>	<b>\$M</b> <b>+67</b> <b>\$W</b> <b>+72</b> <b>\$F</b> <b>+114</b> <b>\$G</b> <b>+40</b> <b>\$B</b> <b>+154</b> <b>\$C</b> <b>+267</b>
CED	BW	WW	YW	SC	DOC	HP	CEM	MILK	MW	MH	CW	MARB	RE	FAT	TEND
+8	+2.1	+75	+138	+1.45	+21	+24	+40	+80							
30	50	23	9	80	51	16	23	54	89	77	23	48	19	70	22

These two full sisters sired by EXAR Rolex are similar from a stoutness and power standpoint. They set down on good feet and legs while being powerful in their body type. This female has a beautiful heifer calf by the now-deceased Basin Payweight Plus 6048.

- Breeding information available sale day.

10

### OSU Empress 0146

CALVED: 2/25/20 • AAA: +\*19681591 • TATL: 0146

<b>+ Baldridge Colonel C251</b> <b>+ EXAR Rolex 8709B</b> <b>+ EXAR Royal Lass 1067</b> <b>ANGUS COW</b> <b>#Barstow Cash</b> <b>OSU Empress 7148</b> <b>+ OSU Empress 5102</b>														<b>+ Baldridge Xpand X743</b> <b>Baldrige Isabel Y69</b> <b>#EXAR 263C</b> <b>BR Royal Lass 19-132</b> <b>#Sitz Dash 10277</b> <b>Barstow Queen W16</b> <b># + S A V Resource 1441</b> <b>+ OSU Empress 2114</b>	<b>\$M</b> <b>+75</b> <b>\$W</b> <b>+79</b> <b>\$F</b> <b>+90</b> <b>\$G</b> <b>+44</b> <b>\$B</b> <b>+134</b> <b>\$C</b> <b>+249</b>
CED	BW	WW	YW	SC	DOC	HP	CEM	MILK	MW	MH	CW	MARB	RE	FAT	TEND
+13	+1.8	+76	+142	+1.46	+27	+28	+40	+1.00							
27	80	16	6	100	56	17	6	18	33	42	18	62	31	82	3

Fantastic brood cow prospect that has a strong lineage of power cows in her pedigree! The granddam of Lots 9 and 10 sold in the 2020 Cowboy Classic to Wall Street Cattle Co. for \$10,000. A maternal brother was selected in the 2021 National Angus Bull Sale at Cattlemen's Congress by Prime Time Cattle in Alberta, Canada, for \$11,000. This female has a tremendous Grenade heifer calf at side and is geared to be a profit center.

- Breeding information available sale day.

9A

### OSU Empress 2144

CALVED: 1/30/22 • AAA: \*20270218 • TATL: 2144

<b># + Basin Payweight 1682</b> <b>Basin Payweight Plus 6048</b> <b>+ EXAR Royal Lass 2810</b> <b>ANGUS COW</b> <b>+ EXAR Rolex 8709B</b> <b>+ OSU Empress 0145</b> <b>OSU Empress 7148</b>														<b># + Basin Payweight 006S</b> <b>21AR O Lass 7017</b> <b>#Connealy Consensus 7229</b> <b>+ EXAR Royal Lass 1067</b> <b>+ Baldridge Colonel C251</b> <b>+ EXAR Royal Lass 1067</b> <b>#Barstow Cash</b> <b>+ OSU Empress 5102</b>	<b>\$M</b> <b>+63</b> <b>\$W</b> <b>+92</b> <b>\$F</b> <b>+95</b> <b>\$G</b> <b>+44</b> <b>\$B</b> <b>+139</b> <b>\$C</b> <b>+243</b>
CED	BW	WW	YW	SC	DOC	HP	CEM	MILK	MW	MH	CW	MARB	RE	FAT	TEND
+12	-0.5	+76	+125	+1.82	+10	+31	+49	+75							
8	8	34	60	56	68	12	82	79	86	42	71	55	42	59	32

This little gal is impressive in her genetic script and phenotypically outstanding. Her \$W is in the top 2% of all non-parent Angus females.

- BW 62 lbs.

10A

### OSU Empress 2134

CALVED: 1/8/22 • AAA: \*20250115 • TATL: 2134

<b>Casino Bomber N33</b> <b>EXAR Grenade 9152B</b> <b>EXAR Merle 7441</b> <b>ANGUS COW</b> <b>+ EXAR Rolex 8709B</b> <b>+ OSU Empress 0146</b> <b>OSU Empress 7148</b>														<b># + KM Broken Bow 002</b> <b>#Casino Annie K48</b> <b>#Sitz Top Game 561X</b> <b>EXAR Merle 2550</b> <b>+ Baldridge Colonel C251</b> <b>+ EXAR Royal Lass 1067</b> <b>#Barstow Cash</b> <b>+ OSU Empress 5102</b>	<b>\$M</b> <b>+100</b> <b>\$W</b> <b>+94</b> <b>\$F</b> <b>+92</b> <b>\$G</b> <b>+43</b> <b>\$B</b> <b>+135</b> <b>\$C</b> <b>+275</b>
CED	BW	WW	YW	SC	DOC	HP	CEM	MILK	MW	MH	CW	MARB	RE	FAT	TEND
+8	+3.4	+89	+148	+1.72	+25	+31	+39	+95							
48	83	7	20	93	40	9	17	1	10	38	22	47	21	74	9

As of the time that this footnote was written, 2134 is the No. 4 female in the Angus breed for \$M when you sort all the non-parent females sired by EXAR Grenade! This female will capture tremendous breeding value.

- BW 71 lbs.



angus

## 2-YEAR-OLD SPRING PAIR



Dam of Lot 11 OSU Empress 5102

YOU'VE DONE  
THE WORK.

Get paid for it.

AngusLink cattle earned an average premium of **\$13.01/cwt** in 2021. Call us at 816-383-5100 or visit [AngusLink.com](http://AngusLink.com) to enroll and get the premium too!

11

## OSU Empress 0137

CALVED: 1/16/20 • AAA: +\*19643755 • TAT: 0137

# + Basin Payweight 1682  
**Basin Payweight Plus 6048**  
+ EXAR Royal Lass 2810

## ANGUS COW

# + S A V Resource 1441  
+ **OSU Empress 5102**  
+ OSU Empress 2114

# + Basin Payweight 0065  
21AR O Lass 7017  
#Connealy Consensus 7229  
+ EXAR Royal Lass 1067  
+ Rito 707 of Ideal 3407 7075  
S A V Blackcap May 4136  
#S A V Brilliance 8077  
OSU Empress 6211

\$M
+68
\$W
+83
\$F
+65
\$G
+36
\$B
+101
\$C
+199

	CED	BW	WW	YW	SC	DOC	MILK	MARB	RE		\$C							
	+9	+1.3	+68	+120	+1.79	+14	+33	+34	+81		+19							
Genomic	62	70	17	20	99	74	4	60	22	CEM MILK	MW	MH	CW	MARB	RE	20	95	24

If your operation is centered around moderate, low input, easy doing females, then pay attention here. This daughter of Payweight Plus 6048 is tremendous from a structural standpoint, robust in her body dimension, and powerful in her width and bone. She comes from a tremendous donor cow that was selected by Wallstreet Cattle Co. This two-year-old laid down and had a really nice heifer calf by Musgrave 316 Exclusive.

• Breeding information available sale day.

11A

## OSU Empress 2170

CALVED: 2/17/22 • AAA: 20286077 • TAT: 2170

+ LD Capitalist 316  
**Musgrave 316 Exclusive**  
Musgrave Prim Lassie 163-386

## ANGUS COW

Basin Payweight Plus 6048  
+ **OSU Empress 0137**  
+ OSU Empress 5102

#Connealy Capitalist 028  
LD Dixie Erica 2053  
#Musgrave Foundation  
#SCR Prim Lassie 80634  
# + Basin Payweight 1682  
+ EXAR Royal Lass 2810  
# + S A V Resource 1441  
+ OSU Empress 2114

\$M
+76
\$W
+71
\$F
+90
\$G
+48
\$B
+138
\$C
+255

CED	BW	WW	YW	SC	DOC	MILK	MARB	RE	\$C
+5	+2.9	+72	+128	+1.44	+17	+28	+63	+77	+255

This heifer calf by Musgrave Exclusive was just in the beginning stages of her time on earth here at the PBC. Her genomic data and GE-EPDs will be available sale day.

• BW 78 lbs.

**ANGUSLINK**<sup>SM</sup>  
VALUE ADDED PROGRAMS





# SPRING COW/CALF PAIRS

angus

## Angus Spring 4- & 5-year-old Pairs

lots 12-19



Lot 12 OSU Blackcap 7180

12

### OSU Blackcap 7180

CALVED: 3/1/17 • AAA: \*18792909 • TAT: 7180

<b># + Quaker Hill Rampage 0A36</b> + QHF Blackcap 6E2 of 4V16 4355 <b>ANGUS COW</b> # EXAR Denver 2002B <b>+ OSU Blackcap 4107</b> + OSU Blackcap 8248 of CAR													
<b># + Boyd New Day 8005</b> # MCC Miss Focus 134 Ideal 4355 of OT26 2440 QHF Blackcap 4V16 of 1H8 <b># EXAR Upshot 0562B</b> + EXAR Royal Lass 1067 # + Rito 112 of 2536 Rito 616 + V A R Precision 3305													
										\$M			
										+34			
										\$W			
										+48			
										\$F			
										+88			
										\$G			
										+65			
										\$B			
										+153			
										\$C			
										+232			
CED	BW	WW	YW	DMI	YH	SC	DOC	HP	CEM	MILK	MW	MH	CW
+11	-0.5	+48	+94	+04			+6		+27	+87	+86		
30	27	91	63	11	95	91	90	45	90	49	39	86	85
												20	19
												15	93

We have gotten along well with the Rampage daughters. This one has the pedigree and is in the prime of her life for any progressive operation. This female has a tremendous heifer calf at side sired by the popular Deer Valley Growth Fund.

• Breeding information available sale day.

12A

### OSU Blackcap 2127

CALVED: 1/6/22 • AAA: \*20252361 • TAT: 2127

<b># + Basin Payweight 1682</b> <b>+ Deer Valley Growth Fund</b> + Deer Valley Rita 36113 <b>ANGUS COW</b> # + Quaker Hill Rampage 0A36 <b>OSU Blackcap 7180</b> + OSU Blackcap 4107													
<b># + Basin Payweight 006S</b> 21AR O Lass 7017 # Plattemere Weigh Up K360 + Deer Valley Rita 9457 <b># MCC Daybreak</b> + QHF Blackcap 6E2 of 4V16 4355 # EXAR Denver 2002B + OSU Blackcap 8248 of CAR													
										\$M			
										+45			
										\$W			
										+74			
										\$F			
										+108			
										\$G			
										+65			
										\$B			
										+172			
										\$C			
										+268			
CED	BW	WW	YW	DMI	YH	SC	DOC	HP	CEM	MILK	MW	MH	CW
+8	+1.0	+75	+141	+73			+15		+28	+85	+82		
50	46	28	13	74	54	67	56	42	17	46	3	15	20
												16	33
												17	34

One of my favorite heifer calves in the sale, this Growth Fund daughter will be an excellent replacement female.

• BW 72 lbs.





Lot 13 OSU Lady 8103

13

## OSU Lady 8103

CALVED: 1/2/18 • AAA: 19036596 • TAT: 8103

HA Outside 3008  
**#HA Cowboy Up 5405**  
 #HA Blackcap Lady 1602  
 ANGUS COW  
 #EXAR Titlelist T011  
**OSU Lady 0155**  
 O S U Lady 4180

#KG Solution 0018  
 #HA Ever Lady 1575  
 #Sitz Upward 307R  
 HA Blackcap Lady 5515  
 #BR Midland  
 EXG Blackcap R054 R3  
 #Bon View New Design 1407  
 O S U 869A Lady 7180

\$M
+56
\$W
+66
\$F
+63
\$G
+33
\$B
+96
\$C
+181

CED	BW	WW	YW	SC	DOC	MILK	MARB	RE	FAT	TEND
+6	+1.8	+61	+101	+1.26	+15	+25	+29	+30	11	20

Like many of the Cowboy Up daughters that are in production at many well respected operations, 8103 fits a type and kind of efficient brood cow with an abundance of rib shape and power. She has a beautiful udder combined with a functional set of feet and legs. Females that will breed and have a calf every time never lose popularity. You will see her Rolex son in the bull sale as Lot 37. She also has a calf at side sired by the ever-popular GAR Home Town that looks to be a genuine herd sire prospect.

• Breeding information available sale day.

14

## OSU Empress 7206

CALVED: 9/3/17 • AAA: +\*18926459 • TAT: 7206

HA Outside 3008  
**#HA Cowboy Up 5405**  
 #HA Blackcap Lady 1602  
 ANGUS COW  
 #S A V Brilliance 8077  
**+ OSU Empress 1105**  
 + OSU Empress 8175

#KG Solution 0018  
 #HA Ever Lady 1575  
 #Sitz Upward 307R  
 HA Blackcap Lady 5515  
 #S A V Bismarck 5682  
 S A V Blackcap May 5270  
 #Stevenson Moneymaker R185  
 + O S U Empress 4123

\$M
+66
\$W
+41
\$F
+49
\$G
+18
\$B
+67
\$C
+153

CED	BW	WW	YW	SC	DOC	MILK	MARB	RE	FAT	TEND
+14	+0.2	+50	+89	+1.55	+4	+11	+14	-.04	62	71

This functionally correct, sensibly sized Cowboy Up daughter is doing a tremendous job with her EXAR Guru bull calf. This female stems from one of the most prolific Brilliance daughters here at the PBC. 1105 was as successful as any donor has been here. She was flushed several ways and has averaged over \$7,500 on everything that has walked through the Cowboy Classic sale ring!

• Breeding information available sale day.

13A

## OSU Home Town 2141

CALVED: 1/26/22 • AAA: \*20270221 • TAT: 2141

+ G A R Ashland  
**G A R Home Town**  
 + Chair Rock Sure Fire 6095  
 ANGUS BULL  
 #HA Cowboy Up 5405  
**OSU Lady 8103**  
 OSU Lady 0155

G A R Early Bird  
 + Chair Rock Ambush 1018  
 # + G A R Sure Fire  
 + Chair Rock Progress 3005  
 HA Outside 3008  
 #HA Blackcap Lady 1602  
 #EXAR Titlelist T011  
 O S U Lady 4180

\$M
+56
\$W
+70
\$F
+85
\$G
+75
\$B
+161
\$C
+265

CED	BW	WW	YW	SC	DOC	MILK	MARB	RE	FAT	TEND
+11	-0.1	+69	+118	+1.71	+18	+21	+1.09	+77	6	68

Another tremendous herd sire prospect sired by Home Town! He has a balanced numerical profile from calving ease to growth to carcass.

• BW 75 lbs.

14A

## OSU Guru 2100

CALVED: 1/1/22 • AAA: \*20250120 • TAT: 2100

EXAR Monumental 6056B  
**+ EXAR Guru 8719B**  
 + EXAR Blackcap 9384  
 ANGUS BULL  
 #HA Cowboy Up 5405  
**+ OSU Empress 7206**  
 + OSU Empress 1105

3F Epic 4631  
 Fwy 7008 of C085 4029  
 #EXAR Denver 2002B  
 + V A R Blackcap 1059  
 HA Outside 3008  
 #HA Blackcap Lady 1602  
 #S A V Brilliance 8077  
 + OSU Empress 8175

\$M
+70
\$W
+59
\$F
+82
\$G
+68
\$B
+150
\$C
+265

CED	BW	WW	YW	SC	DOC	MILK	MARB	RE	FAT	TEND
+11	+1.0	+59	+103	+2.20	+9	+20	+1.13	+49	67	71

The first calf born in 2022 at the PBC. Sired by the popular EXAR Guru, he is tremendous for sheer shape and dimension. He will make an outstanding herd sire prospect one day.

• BW 55 lbs.





# SPRING COW/CALF PAIRS

angus



Lot 15 OSU Lady 8172



Lot 16 OSU Bardolena 8206



Maternal granddam of Lot 16

15

## OSU Lady 8172

CALVED: 3/11/18 • AAA: \*19084720 • TAT: 8172

#S A V Final Answer 0035  
**OSU Final Answer 4225**  
OSU Jilt 2137  
ANGUS COW  
# + PVF Insight 0129  
**OSU Lady 6108**  
OSU Lady 0155

#Sitz Traveler 8180  
S A V Emulous 8145  
#S A V Brilliance 8077  
+ OSU Jilt 0105  
#S A V Brilliance 8077  
+ PVF Missie 790  
#EXAR Titlelist T011  
O S U Lady 4180

\$M	+83
\$W	+73
\$F	+56
\$G	+40
\$B	+95
\$C	+206

CED	BW	WW	YW	SC	DOC	MILK	MARB	RE	FAT	TEND
+8	+0.5	+53	+78	+84	+17	+35	+42	+57	41	41

A female that again will garner the attention of cattlemen who appreciate solid, functional brood cow prospects that leave an impact with efficiency and sound replacement females. 8172 ranks in the top 1% of Angus dams for HP EPD and also posts an impressive +83 (top 3%) \$M. A son sells as Lot 44.

- Breeding information available sale day.

16

## OSU Bardolena 8206

CALVED: 9/1/18 • AAA: +\*19254803 • TAT: 8206

Plainview Lutton E102  
**+S&R Roundtable J328**  
+ PVF Proven Queen 786  
ANGUS COW  
Dameron First Class  
**+OSU Bardolena 2210**  
+ OSU Bardolena 8221 of CAR

#EXAR Lutton 1831  
Plainview Pride C123  
#BR Midland  
+ PVF Proven Queen 419  
EXG RS First Rate S903 R3  
Dameron Northern Miss 3114  
# + EXAR New Look 2971  
+ PF E161 Bardolena 3153

\$M	+47
\$W	+53
\$F	+93
\$G	+59
\$B	+152
\$C	+244

CED	BW	WW	YW	SC	DOC	MILK	MARB	RE	FAT	TEND
+5	+3.0	+56	+90	+42	-3	+25	+73	+84	17	97

We still enjoy mating cattle for the show ring, and this young donor cow from the heart of the program is ready to go be a profit center for someone with the desire to raise halter prospects.

Maternal sisters sell as fall heifer calf highlight Lots 22A-B-C-D. A maternal brother sells as Lot 55.

- Breeding information available sale day.

15A

## OSU Lady 2103

CALVED: 1/1/22 • AAA: \*20250122 • TAT: 2103

Casino Bomber N33  
**EXAR Grenade 9152B**  
EXAR Merle 7441  
ANGUS COW  
OSU Final Answer 4225  
**OSU Lady 8172**  
OSU Lady 6108

# + KM Broken Bow 002  
#Casino Annie K48  
#Sitz Top Game 561X  
EXAR Merle 2550  
#S A V Final Answer 0035  
OSU Jilt 2137  
# + PVF Insight 0129  
OSU Lady 0155

\$M	+97
\$W	+102
\$F	+106
\$G	+52
\$B	+158
\$C	+302

CED	BW	WW	YW	SC	DOC	MILK	MARB	RE	FAT	TEND
+9	+0.6	+85	+141	+45	+26	+33	+55	+91	22	15

Fancy heifer calf sired by EXAR Grenade 9152B. She has a phenomenal GE-EPD profile, highlighted by being in the top 1% for \$M and \$W!

- BW 65 lbs.

16A

## OSU Intuition 2133

CALVED: 1/7/22 • AAA: \*20280746 • TAT: 2133

# + PVF Insight 0129  
**+C&C Intuition 7104**  
+ C&C Winnie 2048  
ANGUS BULL  
+S&R Roundtable J328  
**+OSU Bardolena 8206**  
+ OSU Bardolena 2210

#S A V Brilliance 8077  
+ PVF Missie 790  
Dameron First Class  
+ RAC Winnie 7456  
Plainview Lutton E102  
+ PVF Proven Queen 786  
Dameron First Class  
+ OSU Bardolena 8221 of CAR

\$M	+51
\$W	+56
\$F	+87
\$G	+41
\$B	+127
\$C	+216

CED	BW	WW	YW	SC	DOC	MILK	MARB	RE	FAT	TEND
+6	+2.3	+52	+83	+24	-2	+27	+33	+83	18	99

This Intuition bull calf is outstanding for phenotype and balance.

- BW 85 lbs.





Lot 17 OSU Empress 8135



Dam of Lot 17



Lot 18 OSU Empress 8177



Dam of Lot 18

17

## OSU Empress 8135

CALVED: 1/9/18 • AAA: +\*19036600 • TAT: 8135

HA Outside 3008  
#HA Cowboy Up 5405  
#HA Blackcap Lady 1602

## ANGUS COW

# + PVF Insight 0129  
+ OSU Empress 5116  
+ OSU Empress 2109

AGI	CED	BW	WW	YW	SC	DOC	MILK	MARB	RE	\$M
+7	+1.4	+73	+124	+79	+17	+21	+16	+68	+204	

Genomic	CED	BW	WW	YW	DMI	YH	SC	DOC	HP	CEM	MILK	MW	MH	CW	MARB	RE	FAT	TEND
42	37	39	65	15	94	85	21	97	71	83	59	82	75	77	37	1	29	

If you have been around the Angus business for very long, then you have figured out that the Cowboy Up daughters are some of the nicest balanced, best uddered, functional cow prospects that are a staple for any program. This female is no different. She is sensibly sized and tremendous on her feet and legs. Check out her son that sells as Lot 33.

- Breeding information available sale day.

18

## OSU Empress 8177

CALVED: 4/3/18 • AAA: \*19104144 • TAT: 8177

#S A V Final Answer 0035  
OSU Final Answer 4225  
OSU Jilt 2137

## ANGUS COW

# + PVF Insight 0129  
+ OSU Empress 5100  
+ OSU Empress 2109

AGI	CED	BW	WW	YW	SC	DOC	MILK	MARB	RE	\$M
+1	+0.5	+55	+104	+1.53	+19	+39	+16	+59	+216	

Genomic	CED	BW	WW	YW	DMI	YH	SC	DOC	HP	CEM	MILK	MW	MH	CW	MARB	RE	FAT	TEND
91	59	46	21	78	9	8	24	30	70	2	29	26	20	93	35	78	8	

The Final Answer son that we kept around for many years did tremendous things from a maternal standpoint. That is evident with this female here. She is fantastic from a balance and look standpoint. 8177 has done everything right, including breeding the first time every year for three years. She is backed by one of the most powerful Insight daughters to be in the donor pen at the PBC. A Grenade son sells at side, and another sells as Lot 30.

- Breeding information available sale day.

17A

## OSU Growth Fund 2129

CALVED: 1/7/22 • AAA: \*20250121 • TAT: 2129

# + Basin Payweight 1682  
+ Deer Valley Growth Fund  
+ Deer Valley Rita 36113

## ANGUS BULL

#HA Cowboy Up 5405  
+ OSU Empress 8135  
+ OSU Empress 5116

AGI	CED	BW	WW	YW	SC	DOC	MILK	MARB	RE	\$M
+5	+2.3	+94	+166	+1.32	+19	+36	+30	+72	+272	

Genomic	CED	BW	WW	YW	DMI	YH	SC	DOC	HP	CEM	MILK	MW	MH	CW	MARB	RE	FAT	TEND
61	55	4	5	87	64	47	23	86	22	6	14	37	4	70	38	13	56	

Excellent herd sire prospect that excels for both WW and YW EPDs that rank in the top 1% of non-parent Angus bulls.

- BW 77 lbs.

18A

## OSU Grenade 2112

CALVED: 1/3/22 • AAA: \*20250123 • TAT: 2112

Casino Bomber N33  
EXAR Grenade 9152B  
EXAR Merle 7441

## ANGUS BULL

OSU Final Answer 4225  
OSU Empress 8177  
+ OSU Empress 5100

AGI	CED	BW	WW	YW	SC	DOC	MILK	MARB	RE	\$M
+4	+1.3	+77	+137	+1.12	+28	+36	+34	+68	+280	

Genomic	CED	BW	WW	YW	DMI	YH	SC	DOC	HP	CEM	MILK	MW	MH	CW	MARB	RE	FAT	TEND
60	48	13	12	91	7	11	6	1	13	6	11	11	4	65	41	71	41	

Really impressive son of Grenade! Ranks in the top 1% for HP EPD and top 5% for Maternal Weaned Calf Value (\$M). A full brother sells as Lot 30.

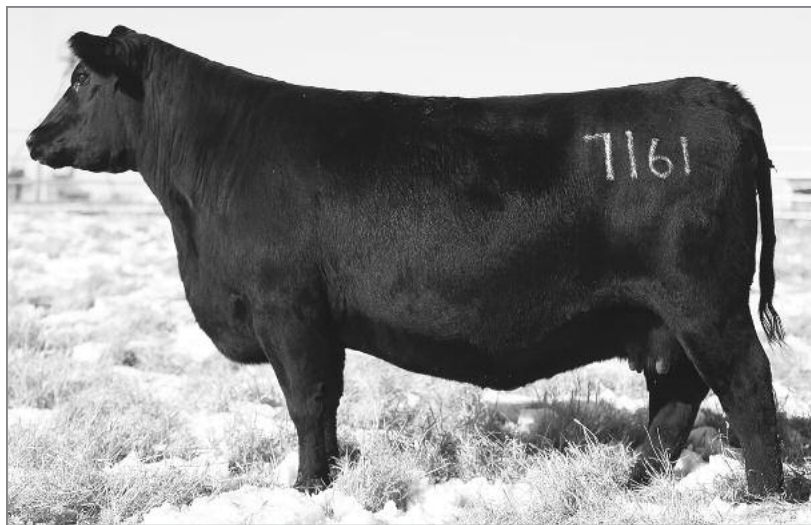
- BW 81 lbs.





# SPRING COW/CALF PAIRS

angus



Lot 19 OSU Jilt 7161



Daughter of Lot 19...sold as Lot 4 in the 2021 Cowboy Classic

19

OSU Jilt 7161

CALVED: 1/29/17 • AAA: \*18926447 [DDC] • TAL: 7161

#S A V Brilliance 8077  
# + PVF Insight 0129  
+ PVF Missie 790

ANGUS COW

+ OSU Class Act  
OSU Jilt 5189  
+ OSU Jilt 9220



CED	BW	WW	YW	SC	DOC	MILK	MARB	RE	\$M
+8	-1.0	+33	+60	-.63	+17	+19	+.25	+.65	+57
\$F									+30
									+75
									\$G
									+32
									\$B
									+107
									\$C
									+196

CED	BW	WW	YW	DMI	YH	SC	DOC	HP	CEM	MILK	MW	MH	CW	MARB	RE	FAT	TEND
20	3	100	98	2	100	98	45	38	37	88	96	96	96	64	59	73	79

What a powerful brood cow that can be mated several different ways! This insight daughter is moderate in her kind, robust in her body type, and tremendously heavy boned. With an abundance of power, she is sure footed and sound on her feet and legs. Her Guru heifer calf is one of the standouts in this group. DD carrier.

• Breeding information available sale day.

19A

OSU Jilt 2102

CALVED: 1/1/22 • AAA: 20250119 [DDP] • TAL: 2102

EXAR Monumental 6056B  
+ EXAR Guru 8719B  
+ EXAR Blackcap 9384

ANGUS COW

# + PVF Insight 0129  
OSU Jilt 7161 [DDC]  
OSU Jilt 5189 [DDC]



CED	BW	WW	YW	SC	DOC	MILK	MARB	RE	\$M
+8	+0.8	+58	+100	1+.15	1+17	+25	1+.78	1+.68	+56
\$F									+60
									+91
									\$G
									+57
									\$B
									+148
									\$C
									+248

CED	BW	WW	YW	DMI	YH	SC	DOC	HP	CEM	MILK	MW	MH	CW	MARB	RE	FAT	TEND
20	3	100	98	2	100	98	45	38	37	88	96	96	96	64	59	73	79

One of my favorite heifer calves in the sale. She has a ton of look and presence and combines that with an abundance of sheer power. GE-EPDs available sale day.

• BW 70 lbs.

## DEDICATED. COMMITTED.

WHOLE HERD REPORTING WITH MATERNALPLUS



Raising quality Angus cattle takes **COMMITMENT**. We take that seriously, which is why we are **DEDICATED** to not only improve our genetics, but also prepare for the future of the Angus breed. We believe that commitment starts with MaternalPlus. Contact AGI at 816-383-5100 or [agi@angus.org](mailto:agi@angus.org) for more information.





Lot 20 OSU Empress 1209



Maternal granddam of Lot 20 OSU Empress 5100



Lot 21  
OSU Empress 1225

20

## OSU Empress 1209

CALVED: 8/30/21 • AAA: \*20122884 • TAT: 1209



WAR Cavalry B063 Z044  
+ Wilks Regiment 9035  
Vintage Chloe 6137

### ANGUS COW

Byergo Black Magic 3348  
+ OSU Empress 9170  
+ OSU Empress 5100



CED	BW	WW	YW	SC	DOC	MILK	MARB	RE	\$M
+5	+3.6	+104	+192	+1.87	+22	+27	+58	+1.24	+40

\$W	\$F	\$G	\$B	\$C
+93	+156	+60	+215	+319

#Connealy Cavalry 1149  
War CC&7 Z044 X029  
+ V A R Empire 3037  
+ V A R Chloe 2227  
Silveiras Conversion 8064  
Byergo Elia Cupcake 5900  
# + PVF Insight 0129  
+ OSU Empress 2109



CED	BW	WW	YW	DMI	YH	SC	DOC	HP	CEM	MILK	MW	MH	CW	MARB	RE	FAT	TEND
63	84	1	1	100	5	1	23	60	19	50	1	1	1	54	2	11	81

I truly believe that this female is exactly where we wanted to be in our breeding program! This Regiment heifer calf is captivating in her silhouette, huge ribbed and near perfect from a structural base perspective. You study the genomic profile on this gal, and the road to the 2022 NJAS gets really exciting in the P&G show!

- BW 80 lbs., ADJ. WW 901 lbs.
- Sells open.



21

## OSU Empress 1225

CALVED: 9/5/21 • AAA: +\*20122876 • TAT: 1225



# + Basin Payweight 1682  
+ Deer Valley Wall Street  
+ Deer Valley Rita 36113

### ANGUS COW

+ EXAR Blue Chip 1877B  
+ OSU Empress 4218  
+ OSU Empress 9207



CED	BW	WW	YW	SC	DOC	MILK	MARB	RE	\$M
+7	+2.1	+69	+129	+1.17	+20	+25	+48	+69	+71

CED	BW	WW	YW	DMI	YH	SC	DOC	HP	CEM	MILK	MW	MH	CW	MARB	RE	FAT	TEND
68	80	5	3	100	6	27	17	5	23	33	7	3	3	54	41	92	92

We have had tremendous success using Deer Valley Wall Street the last two years, and this female fits right into that statement. 1225 is long patterned, heavy boned, and phenomenal in her balance and profile. This female has a genomic profile of relevance to be a generating center for years to come.

- BW 82 lbs., ADJ. WW 817 lbs.
- Sells open.





## Full sisters sell as Lots 22A-B-C-D

Lot 22B  
OSU Bardolena 1223



Lot 22A OSU Bardolena 1220



Sire of Lots 22A-B-C-D Silveiras Forbes 8088

# 22A



## OSU Bardolena 1220

CALVED: 9/3/21 • AAA: +\*20122984 • TAT: 1220

+ Silveiras Style 9303

**Silveiras Forbes 8088**

+ Collision Forever Lady 1622

ANGUS COW

Dameron First Class

**+ OSU Bardolena 2210**

+ OSU Bardolena 8221 of CAR

Gambles Hot Rod

+ Silveiras Elba 2520

+ EXAR Blue Chip 1877B

Moffitt Forever Lady M831

EXG RS First Rate S903 R3

Dameron Northern Miss 3114

# + EXAR New Look 2971

+ PF E161 Bardolena 3153

Genomic	CED	BW	WW	YW	SC	DOC	MILK	MARB	RE	\$M
8	+10	+0.7	+48	+69	-27	-10	+19	+50	+42	+176

Genomic	CED	BW	WW	YW	DMI	YH	SC	DOC	HP	CEM	MILK	MW	MH	CW	MARB	RE	FAT	TEND
8	9	82	100	4	89	96	100	78	40	75	99	92	96	47	87	82	20	

These four embryo sibs sired by the ROV Show Bull of the Year, Silveiras Forbes 8088, are some of the very first ones you will have the opportunity to purchase! I am confident that Forbes is well on his way to becoming the first choice in halter prospect use. 1220 is a robust bodied, aesthetically pleasing, long striding female that has plenty of power!

- BW 87 lbs., ADJ. WW 610 lbs.
- Sells open.

# 22B



## OSU Bardolena 1223

CALVED: 9/4/21 • AAA: +\*20122985 • TAT: 1223

+ Silveiras Style 9303

**Silveiras Forbes 8088**

+ Collision Forever Lady 1622

ANGUS COW

Dameron First Class

**+ OSU Bardolena 2210**

+ OSU Bardolena 8221 of CAR

Gambles Hot Rod

+ Silveiras Elba 2520

+ EXAR Blue Chip 1877B

Moffitt Forever Lady M831

EXG RS First Rate S903 R3

Dameron Northern Miss 3114

# + EXAR New Look 2971

+ PF E161 Bardolena 3153

Genomic	CED	BW	WW	YW	SC	DOC	MILK	MARB	RE	\$M
61	+3	+2.9	+47	+71	-28	-13	+12	+44	+55	+167

Genomic	CED	BW	WW	YW	DMI	YH	SC	DOC	HP	CEM	MILK	MW	MH	CW	MARB	RE	FAT	TEND
61	63	56	97	37	61	98	100	33	96	97	87	77	75	66	43	67	81	

This group will be headlined by 1223. This female really came together after the boys clipped her out! She is huge in the middle part of her body, wide based and heavy boned. She really has a captivating look from the side, and she is moderate in her frame and fluid in her movement. This female will be a lot of fun to campaign for any young person.

- BW 80 lbs., ADJ. WW 696 lbs.
- Sells open.





Lot 22C OSU Bardolena 1228



Granddam of Lots 22A-B-C-D OSU Bardolena 8221 of CAR

Lot 22D  
OSU Bardolena 1231

22C

## OSU Bardolena 1228

CALVED: 9/6/21 • AAA: +\*20122987 • TAT: 1228

+ Silveiras Style 9303

**Silveiras Forbes 8088**

+ Collison Forever Lady 1622

ANGUS COW

Dameron First Class

**+ OSU Bardolena 2210**

+ OSU Bardolena 8221 of CAR

Gambles Hot Rod

+ Silveiras Elba 2520

+ EXAR Blue Chip 1877B

Moffitt Forever Lady M831

EXG RS First Rate S903 R3

Dameron Northern Miss 3114

# + EXAR New Look 2971

+ PF E161 Bardolena 3153

CAGI

CED	BW	WW	YW	SC	DOC	MILK	MARB	RE	\$M
+9	+1.6	+52	+89	+60	-1	+21	+87	+65	+58

CED	BW	WW	YW	DMI	YH	SC	DOC	HP	CEM	MILK	MW	MH	CW	MARB	RE	FAT	TEND
23	44	63	90	27	90	67	90	50	77	72	95	92	89	16	39	93	28

Really well built, sure footed daughter of the 2021 Cattlemen's Congress ROV Champion Angus Bull, Forbes. She simulates her sisters well. This gal will be fun to campaign to junior Angus shows!

- BW 81 lbs., ADJ. WW 638 lbs.
- Sells open.

22D

## OSU Bardolena 1231

CALVED: 9/12/21 • AAA: +\*20196811 • TAT: 1231

+ Silveiras Style 9303

**Silveiras Forbes 8088**

+ Collison Forever Lady 1622

ANGUS COW

Dameron First Class

**+ OSU Bardolena 2210**

+ OSU Bardolena 8221 of CAR

Gambles Hot Rod

+ Silveiras Elba 2520

+ EXAR Blue Chip 1877B

Moffitt Forever Lady M831

EXG RS First Rate S903 R3

Dameron Northern Miss 3114

# + EXAR New Look 2971

+ PF E161 Bardolena 3153

CAGI

CED	BW	WW	YW	SC	DOC	MILK	MARB	RE	\$M
+5	+3.0	+50	+70	-.48	-17	+17	+.59	+.25	+46

CED	BW	WW	YW	DMI	YH	SC	DOC	HP	CEM	MILK	MW	MH	CW	MARB	RE	FAT	TEND
43	60	86	100	9	93	97	100	89	47	76	97	87	100	26	96	90	78

One of the sleek fronted, really feminine females of this flush. She is tremendously long patterned and attractive in her hip and hind leg.

A maternal sister to Lots 22A-B-C-D sells as Lot 16. A maternal brother sells as Lot 55.

- BW 86 lbs., ADJ. WW 625 lbs.
- Sells open.





## Hereford Fall Show Heifer &amp; Donor Prospect

lot 23



Lot 23 OSU Lass 1326

23



## OSU Lass 1326

CALVED: 8/29/21 • AHA: 44318709 • TAT: 1326 • Horned

BR Belle Air 6011 {CHB}

EXR Bankroll 8130 ET {CHB}

EXR Lexus 4208 ET

HEREFORD COW

SB BVM 23D Git-r-Done 111X ET

OSU Lass 6311

OSU Lass 3306

Bar S LHF 028 240 {CHB}

BR Belle 4082 ET

LSW WCC About Time X06

TCC Miss Lexus 84 ET

SB 122L Git-r-Done 19R ET {SOD}

HVH Reba 23D

TH 71U 719T Mr Hereford 11X {SOD}

OSU Lass 1306

\$BMI

+342

\$BII

+411

\$CHB

+110

CED	BW	WW	YW	SC	MILK	M&G	REA	MARB
+0.9	+4.1	+62	+107	+1.1	+28	+59	+65	-.02

We are sneaking in a female of a different color this year! I've always admired the Hereford cows here, and sorting them to EXR Bankroll was a fantastic decision, as is evidenced by this female. She is impressive in her length, balance and body depth. She combines that with a super attractive hip and hind leg set. She is a late August horned, deep red female!

- BW 75 lbs., ADJ. WW 656 lbs.

- Sells open.



Sire of Lot 23 EXR Bankroll 8130 ET





# The Bulls

## Lots 24–62

### ABOUT THE “COWBOY CLASSIC” BULLS

We are proud to offer this set of spring 2021 and fall 2020 yearling bulls. Several are closely related and are cataloged by relationship and age for your convenience.

The sale bulls were hand fed since weaning. They have been on a diet of free-choice hay and 12 to 15 pounds per day of concentrated bull ration. Please refer to the “Taking Care of Your Bull” section below for our recommendations.

Again this year we are offering a **volume discount** for bull buyers that works proportionately to the number of bulls purchased, as follows:

- Buy 2 bulls—receive 2% discount**
- Buy 3 bulls—receive 3% discount**
- Buy 4 bulls—receive 4% discount**
- Buy 5 bulls—receive 5% discount**
- Buy 6 bulls—receive 6% discount**
- Buy 7 or more bulls—discount is 10%**

**We stand behind these bulls 100 percent.** They are guaranteed breeders and fertile to the best of our knowledge. If bulls become functionally infertile within the next twelve months, we will provide a satisfactory replacement, if available, or we will issue a credit equal to the purchase price minus salvage value in any of our future sales. We ask that you contact us before you cull an infertile bull. Remember...this is not a life insurance policy whereby we will replace bulls for any reason but our attempt to make sure that you are satisfied with your purchase.

#### Taking Care of Your Bull

Remember, these bulls are only 12 to 19 months of age and are still growing. Protect your investment by feeding your bull well. You should feed 5 to 10 lbs. of grain, 1 to 2 lbs. of protein supplement and free-choice hay to allow your bull/s to adequately develop. Supplemental feeding during breeding season is recommended if possible. After breeding season, continue to feed liberally so the bull will grow out well. All bulls selling have been getting plenty of exercise and have passed a breeding soundness examination; however, there is a natural limit to what can be expected of them. Observe the following guidelines in determining how heavily to use your bull based on his age at the start of breeding season.

<u>Bull's Age</u>	<u>No. of Females</u>
12 – 15 mos.	10 – 12
15 – 18 mos.	12 – 18
18 – 24 mos.	18 – 25
24 mos. and older	25 – 35

#### NOTE:

OSU will retain 1/3 revenue sharing and 1/3 semen interest in Lots 24–62.  
Read below for details.

### SELLING 2/3 INTEREST IN & FULL POSSESSION OF ALL SERVICE-AGE BULLS

We are reserving 1/3 revenue sharing and 1/3 semen interest in all service-age bulls in the sale. This means the bull is totally in your control in how you want to handle him, and you get 100% of the salvage value of the bull. We are simply reserving the right to a share of semen sales revenue from the bull if, at some point in the future, semen sales become a reality. If you sell the bull to another breeder, Oklahoma State University Purebred Beef Center retains the semen interest.

While it is unlikely that large amounts of semen will be sold from many of the bulls, bulls are often “discovered” later in life, after proving themselves in the breeding pasture. It is for this reason that we are keeping a semen interest in all bulls sold in the Cowboy Classic.

Even bulls sold to commercial herds may become popular at a later time, as more carcass data is collected on their calves. If you purchase a bull that we retain an interest in and you choose to collect semen from that bull as an “insurance policy” for your own use, that semen is 100% yours. Oklahoma State University Purebred Beef Center may also wish to collect semen from the bull, either for in-herd use or to build a jointly owned semen bank for sale purposes.

If you are not interested in collecting semen on the bull, OSU has the right to collect the bull, at their own expense, for their use. Semen collection will be arranged at the convenience of the owner of the possession interest.

*Adapted with permission from Gardiner Angus Ranch.*





## Driving the science of better breeding

There's little room for error in the cattle business. Producers need the most advanced information to make smart selection decisions, and Angus Genetics Inc. (AGI) provides it through genomic-enhanced expected progeny differences (GE-EPDs).

EPDs that traditionally contained all pedigree, performance and progeny information now also include results from available genomic, or DNA, tests. Breeders who use genomic technology give buyers access to AGI-generated GE-EPDs that provide:

Increased predictability and decreased risk for young and unproven animals due to enhanced accuracy of EPDs

Better characterization of genetics for difficult-to-measure performance traits (such as carcass traits, maternal traits and feed efficiency)

The ability to make more rapid progress for traits that are important to you, due to:

- more accurate selection
- easier identification of genetic outliers
- the ability to propagate young animals with confidence earlier in their lives

In fact, GE-EPDs on unproven animals have the same amount of accuracy as if they had recorded 10-36 calves, depending on the trait. That's valuable insight, offered regularly through the breed's weekly national cattle evaluation at [www.angus.org](http://www.angus.org).

### How do you know if EPDs are genomic-enhanced?

Ask your breeder, refer to the registration paper, or look for the AGI GE-EPD logo, Angus GS™ powered by partner Neogen GeneSeek or the HD50k or i50k by partner Zoetis.



The Angus EPDs in this catalog are genomically enhanced or will be by sale day, giving you the maximum reliability available to use in making your selections. Feel free to ask us if you have questions on how to use the information, or go online to [angus.org](http://angus.org) for more information.

## ABOVE AVERAGE GOALS REQUIRE TARGETED BULLS

*Aim High*

The Targeting the Brand™ logo highlights registered Angus bulls with greater genetic potential to produce calves that meet the most challenging specifications of the *Certified Angus Beef®* brand.

Only 1 in 4 non-parent Angus bulls qualify.

### *Minimum Genetic Requirements*

Marbling EPD (Marb)	+0.65
Dollar Grid Carcass Index (\$G)	+55.0



For more information on Targeting the Brand™ visit [CABcattle.com](http://CABcattle.com).





# Angus Spring Yearling Bulls

lots 24-47



Ranks in the top 1% of non-parent Angus bulls for YW, RE, SG, SB and SC; top 2% for WW, CW, SW and SF; top 10% for MW, MH and Marbling.

Lot 24 OSU Home Town 1170

Sire of Lots 24 & 25 G A R Home Town

24

**OSU Home Town 1170**

CALVED: 3/6/21 • AAA: +\*19994418 • TAT: 1170

+ G A R Ashland  
**G A R Home Town**  
+ Chair Rock Sure Fire 6095  
**ANGUS BULL**  
3F Epic 4631  
+ **OSU Empress 8160**  
OSU Empress 5122

G A R Early Bird  
+ Chair Rock Ambush 1018  
# + G A R Sure Fire  
+ Chair Rock Progress 3005  
Varilek Product 2010 04  
Zebo Queen 1072  
# + S A V Resource 1441  
OSU Empress 6154

\$M  
+59  
\$W  
+93  
\$F  
+128  
\$G  
+84  
\$B  
+211  
\$C  
+333

CED	BW	WW	YW	SC	DOC	MILK	MARB	RE	FAT
+6	+1.3	+88	+158	+83	+24	+29	+1.13	+1.25	66

Without question, one of the best herd sire prospects to be raised at the Purebred Beef Center in some time! A March yearling that is impressively thick made, stout boned and robust in his body. 1170 is going to command some attention sale day with a breed-leading set of numbers to complement his impressive individual data! This bull charts a yearling weight over 1500 lbs. along with a 17.5 sq. inch REA! A full sister sells as Lot 5.

• BW 84 lbs., ADJ. WW 837 lbs., ADJ. YW 1517 lbs., ACT. SC 35 cm.  
Ultrasound: ADJ. %IMF 4.92, ADJ. REA 17.5 sq. in.

25

**OSU Home Town 1117**

CALVED: 1/5/21 • AAA: +\*19943006 • TAT: 1117

+ G A R Ashland  
**G A R Home Town**  
+ Chair Rock Sure Fire 6095  
**ANGUS BULL**  
# Connealy Confidence Plus  
+ **OSU Empress 8143**  
+ OSU Empress 5102

G A R Early Bird  
+ Chair Rock Ambush 1018  
# + G A R Sure Fire  
+ Chair Rock Progress 3005  
# Connealy Confidence 0100  
Elbanna of Conanga 1209  
# + S A V Resource 1441  
+ OSU Empress 2114

\$M  
+80  
\$W  
+56  
\$F  
+76  
\$G  
+79  
\$B  
+155  
\$C  
+281

CED	BW	WW	YW	SC	DOC	MILK	MARB	RE	FAT
+12	-0.6	+54	+96	+55	+17	+18	+1.27	+74	40

Tremendous pedigree on this Home Town son that should garner attention not only for his calving ease option, but he should sire low input, efficient brood cow prospects. 1117 also can be a game changer from an end-product value standpoint with his 8.34% IMF figure from ultrasound.

• BW 74 lbs., ADJ. WW 698 lbs., ADJ. YW 1333 lbs., ACT. SC 38 cm.  
Ultrasound: ADJ. %IMF 8.34, ADJ. REA 13.6 sq. in.



# SPRING YEARLING BULLS

angus



Lot 26 OSU Power Play 1104

## Full brothers sell as Lots 26 & 27

26

### OSU Power Play 1104

CALVED: 1/1/21 • AAA: +\*19947887 • TAT: 1104

# + Basin Payweight 1682  
+ **V A R Power Play 7018**  
+ Sandpoint Blackbird 8809

#### ANGUS BULL

# S A V Brilliance 8077  
+ **OSU Empress 1105**  
+ OSU Empress 8175

# + Basin Payweight 006S  
21AR O Lass 7017  
# Connealy Onward  
+ Riverbend Blackbird 4301  
# + S A V Bismarck 5682  
S A V Blackcap May 5270  
# Stevenson Moneymaker R185  
+ O S U Empress 4123

\$M
+68
\$W
+85
\$F
+122
\$G
+49
\$B
+171
\$C
+290

CED	BW	WW	YW	SC	DOC	MILK	MARB	RE	FAT	TEND
+10	+1.3	+86	+150	+1.70	+13	+21	+73	+49	95	99

Surefire calving ease specialist here with this Power Play son. This standout has been impressive for growth throughout his entire life. 1104 was a member of our pen of bulls at the Cattlemen's Congress.

• BW 57 lbs., ADJ. WW 820 lbs., ADJ. YW 1450 lbs., ACT. SC 41 cm.  
Ultrasound: ADJ. %IMF 4.55, ADJ. REA 14.6 sq. in.

27

### OSU Power Play 1158

CALVED: 2/12/21 • AAA: +\*19981616 • TAT: 1158

# + Basin Payweight 1682  
+ **V A R Power Play 7018**  
+ Sandpoint Blackbird 8809

#### ANGUS BULL

# S A V Brilliance 8077  
+ **OSU Empress 1105**  
+ OSU Empress 8175

# + Basin Payweight 006S  
21AR O Lass 7017  
# Connealy Onward  
+ Riverbend Blackbird 4301  
# + S A V Bismarck 5682  
S A V Blackcap May 5270  
# Stevenson Moneymaker R185  
+ O S U Empress 4123

\$M
+85
\$W
+74
\$F
+79
\$G
+37
\$B
+117
\$C
+237

CED	BW	WW	YW	SC	DOC	MILK	MARB	RE	FAT	TEND
+10	+0.4	+70	+122	+1.56	+23	+21	+.54	+.25	98	96

February Power Play son that is double digit CED and low BW EPD with a +85 \$M.

• BW 85 lbs., ADJ. WW 575 lbs., ADJ. YW 1153 lbs., ACT. SC 36 cm.  
Ultrasound: ADJ. %IMF 4.20, ADJ. REA 12.5 sq. in.





Lot 28 OSU Ashland 1141



Dam of Lot 28 OSU Empress 9133

28

## OSU Ashland 1141

CALVED: 1/14/21 • AAA: \*19955851 • TAL: 1141



G A R Early Bird

+ G A R Ashland

+ Chair Rock Ambush 1018

ANGUS BULL

+ TEX Playbook 5437

+ OSU Empress 9133

OSU Empress 6137

+ G A R Daylight

+ G A R Progress 830

# + B/R Ambush 28

+ G A R Yield Grade N366

# + Basin Payweight 1682

+ Rita 1C43 of 9M26 Complete

# + EXAR Resistal 3710B

OSU Empress 3142

CED	BW	WW	YW	SC	DOC	MILK	MARB	RE	\$M
+13	-0.8	+80	+133	+1.82	+26	+24	+1.10	+.70	+73
									\$W
									+90
									\$F
									+90
									\$G
									+71
									\$B
									+161
									\$C
									+282



CED	BW	WW	YW	DMI	YH	SC	DOC	HP	CEM	MILK	MW	MH	CW	MARB	RE	FAT	TEND
9	7	21	55	77	74	3	4	84	41	67	79	87	49	10	63	64	92

Really nice calving ease specialist with impressive growth and scanned with over 15 inches of REA.

• BW 51 lbs., ADJ. WW 797 lbs., ADJ. YW 1445 lbs., ACT. SC 36 cm.

Ultrasound: ADJ. %IMF 5.72, ADJ. REA 15.3 sq. in.

29

## OSU Ashland 1130

CALVED: 1/10/21 • AAA: \*19943024 [M1F] • TAL: 1130



G A R Early Bird

+ G A R Ashland

+ Chair Rock Ambush 1018

ANGUS BULL

EXAR Monumental 6056B

OSU Mabel 9141

OSU Mabel 7157

+ G A R Daylight

+ G A R Progress 830

# + B/R Ambush 28

+ G A R Yield Grade N366

3F Epic 4631

Fwy 7008 of C085 4029

# EXAR Denver 2002B

+ OSU Mabel 4142

CED	BW	WW	YW	SC	DOC	MILK	MARB	RE	\$M
+11	+0.1	+74	+129	+.60	+7	+25	+1.21	+.67	+58
									\$W
									+82
									\$F
									+83
									\$G
									+75
									\$B
									+158
									\$C
									+263



CED	BW	WW	YW	DMI	YH	SC	DOC	HP	CEM	MILK	MW	MH	CW	MARB	RE	FAT	TEND
5	8	29	39	91	55	56	96	73	68	62	67	57	45	5	51	83	62

Another calving ease candidate sired by the popular GAR Ashland that will also improve end-product merit.

• BW 70 lbs., ADJ. WW 784 lbs., ADJ. YW 1394 lbs., ACT. SC 38 cm.

Ultrasound: ADJ. %IMF 5.41, ADJ. REA 15.3 sq. in.



# SPRING YEARLING BULLS

angus



Lot 30 OSU Grenade 1143

30

## OSU Grenade 1143

CALVED: 1/19/21 • AAA: \*19955853 • TAL: 1143



Casino Bomber N33

**EXAR Grenade 9152B**

EXAR Merle 7441

ANGUS BULL

OSU Final Answer 4225

**OSU Empress 8177**

+ OSU Empress 5100



# + KM Broken Bow 002

# Casino Annie K48

# Sitz Top Game 561X

EXAR Merle 2550

# S A V Final Answer 0035

OSU Jilt 2137

# + PVF Insight 0129

+ OSU Empress 2109

CED	BW	WW	YW	SC	DOC	MILK	MARB	RE	\$M
+7	0.0	+74	+127	+91	+22	+34	+06	+68	+76

CED	BW	WW	YW	DMI	YH	SC	DOC	HP	CEM	MILK	MW	MH	CW	MARB	RE	FAT	TEND
70	51	20	26	90	24	36	17	6	27	13	33	21	21	93	46	90	13

One of the standouts from our pen of three bulls that was exhibited at the 2022 Cattlemen's Congress. This son of the dynamic EXAR Grenade 9152B is impressive from a power and mass standpoint. He also would be recommended for use on heifers.

• BW 72 lbs., ADJ. WW 801 lbs., ADJ. YW 1398 lbs., ACT. SC 33 cm.

Ultrasound: ADJ. %IMF 3.72, ADJ. REA 14.8 sq. in.



Dam of Lot 30 OSU Empress 8177...sells as Lot 18





Lot 31 OSU Grenade 1161



Sire of Lots 30-32 EXAR Grenade 9152B



Lot 32 OSU Grenade 1162

31

## OSU Grenade 1161

CALVED: 2/15/21 • AAA: \*19981611 • TAL: 1161



Casino Bomber N33

EXAR Grenade 9152B

EXAR Merle 7441

ANGUS BULL

+ TEX Playbook 5437

+ OSU Empress 9102

OSU Empress 6137

# + KM Broken Bow 002

# Casino Annie K48

# Sitz Top Game 561X

EXAR Merle 2550

# + Basin Payweight 1682

+ Rita 1C43 of 9M26 Complete

# + EXAR Resistal 3710B

OSU Empress 3142

\$M
+65
\$W
+80
\$F
+114
\$G
+24
\$B
+138
\$C
+244

CED	BW	WW	YW	SC	DOC	MILK	MARB	RE
+11	+1.1	+77	+133	+1.29	+19	+25	+0.01	+0.88

CED	BW	WW	YW	DMI	YH	SC	DOC	HP	CEM	MILK	MW	MH	CW	MARB	RE	FAT	TEND
7	19	20	32	92	46	17	29	18	3	68	15	23	15	95	22	81	99

Adjust your eyes to this middle of February calf. He has been a standout since birth and will be a well balanced, surefire calving ease specialist without sacrificing growth.

- BW 79 lbs., ADJ. WW 736 lbs., ADJ. YW 1350 lbs., ACT. SC 35 cm.
- Ultrasound: ADJ. %IMF 4.07, ADJ. REA 15.0 sq. in.

32

## OSU Grenade 1162

CALVED: 2/15/21 • AAA: \*19981612 • TAL: 1162



Casino Bomber N33

EXAR Grenade 9152B

EXAR Merle 7441

ANGUS BULL

+ Deer Valley Unique 5635

OSU Lady 9155

OSU Lady 7108

# + KM Broken Bow 002

# Casino Annie K48

# Sitz Top Game 561X

EXAR Merle 2550

# Plattemere Weigh Up K360

+ Sitz Henrietta Pride 643T

# EXAR Denver 2002B

OSU Lady 0155

\$M
+87
\$W
+79
\$F
+105
\$G
+43
\$B
+147
\$C
+278

CED	BW	WW	YW	SC	DOC	MILK	MARB	RE
+7	+1.7	+80	+136	+0.99	+21	+21	+0.30	+1.07

CED	BW	WW	YW	DMI	YH	SC	DOC	HP	CEM	MILK	MW	MH	CW	MARB	RE	FAT	TEND
38	48	19	35	68	34	42	29	1	20	95	43	27	37	72	7	36	70

Tremendous pedigree on this calving ease option sired by Grenade. 1162 ratioed at 106 for WW, 108 for YW, 102 for IMF, and 117 for REA. This rascal scanned with an actual REA of 15.5 square inches! +87 \$M.

- BW 76 lbs., ADJ. WW 774 lbs., ADJ. YW 1430 lbs., ACT. SC 35 cm.
- Ultrasound: ADJ. %IMF 4.15, ADJ. REA 16.8 sq. in.



# SPRING YEARLING BULLS

angus



Lot 33 OSU Rolex 1102



Dam of Lot 33 OSU Empress 8135...sells as Lot 17



Dam of Lot 34 OSU Empress 4116



Lot 34 OSU Rolex 1122

## 33

### OSU Rolex 1102

CALVED: 1/1/21 • AAA: \*19943016 • TAT: 1102

+ Baldridge Colonel C251  
+ **EXAR Rolex 8709B**  
+ EXAR Royal Lass 1067

ANGUS BULL

#HA Cowboy Up 5405  
+ **OSU Empress 8135**  
+ OSU Empress 5116

+ Baldridge Xpand X743  
Baldridge Isabel Y69  
#EXAR 263C  
BR Royal Lass 19-132  
HA Outside 3008  
#HA Blackcap Lady 1602  
# + PVF Insight 0129  
+ OSU Empress 2109

\$M	+69
\$W	+78
\$F	+91
\$G	+31
\$B	+122
\$C	+227

CED	BW	WW	YW	SC	DOC	MILK	MARB	RE	
+12	-0.3	+65	+117	+71	+13	+31	+12	+70	

CED	BW	WW	YW	DMI	YH	SC	DOC	HP	CEM	MILK	MW	MH	CW	MARB	RE	FAT	TEND
20	29	73	65	19	95	84	39	63	32	36	88	92	83	90	57	21	70

Stout, moderate, robust rascal that is a calving ease prospect with a double digit CED, negative BW EPD, and an abundance of growth. His dam sells as Lot 17.

• BW 59 lbs., ADJ. WW 686 lbs., ADJ. YW 1302 lbs., ACT. SC 36 cm.  
Ultrasound: ADJ. %IMF 3.77, ADJ. REA 13.5 sq. in.

## 34

### OSU Rolex 1122

CALVED: 1/7/21 • AAA: +\*19943012 • TAT: 1122

+ Baldridge Colonel C251  
+ **EXAR Rolex 8709B**  
+ EXAR Royal Lass 1067

ANGUS BULL

#EXAR Upshot 0562B  
**OSU Empress 4116**  
# + OSU Empress 2136

+ Baldridge Xpand X743  
Baldridge Isabel Y69  
#EXAR 263C  
BR Royal Lass 19-132  
#Sitz Upward 307R  
# + EXAR Barbara T020  
#Connealy Consensus 7229  
OSU Empress 6154

\$M	+35
\$W	+69
\$F	+132
\$G	+53
\$B	+185
\$C	+275

CED	BW	WW	YW	SC	DOC	MILK	MARB	RE	
+5	+4.0	+78	+145	+1.46	+21	+27	+55	+1.00	

CED	BW	WW	YW	DMI	YH	SC	DOC	HP	CEM	MILK	MW	MH	CW	MARB	RE	FAT	TEND
81	97	14	7	77	21	13	20	97	35	65	4	9	4	48	9	19	65

Tremendously stout and powerful son of Rolex that is recommended for use on cows. This rascal is packed full of muscle shape. Full brother to Lot 35.

• BW 80 lbs., ADJ. WW 765 lbs., ADJ. YW 1431 lbs., ACT. SC 37 cm.  
Ultrasound: ADJ. %IMF 4.97, ADJ. REA 14.2 sq. in.

**Full brothers sell as Lots 34 & 35**





Sire of Lots 33-36 EXAR Rolex 8709B



Sire of Lots 37 &amp; 38 EXAR Guru 8719B

35

## OSU Rolex 1129

CALVED: 1/9/21 • AAA: +\*19943013 • TAT: 1129

+ Baldridge Colonel C251  
+ EXAR Rolex 8709B  
+ EXAR Royal Lass 1067

## ANGUS BULL

#EXAR Upshot 0562B

OSU Empress 4116

# + OSU Empress 2136

+ Baldridge Xpand X743

Baldridge Isabel Y69

#EXAR 263C

BR Royal Lass 19-132

#Sitz Upward 307R

# + EXAR Barbara T020

#Connealy Consensus 7229

OSU Empress 6154

\$M
+38
\$W
+68
\$F
+100
\$G
+61
\$B
+161
\$C
+247

CED	BW	WW	YW	SC	DOC	MILK	MARB	RE	\$C
+7	+1.4	+71	+132	+1.06	+21	+26	+87	+67	+247

Big, stout, rugged son of Rolex that would inject tremendous growth into a calf crop. Full brother to Lot 34.

• BW 87 lbs., ADJ. WW 718 lbs., ADJ. YW 1400 lbs., ACT. SC 37 cm.  
Ultrasound: ADJ. %IMF 5.15, ADJ. REA 14.8 sq. in.

37

## OSU Guru 1151

CALVED: 2/8/21 • AAA: +\*19972838 • TAT: 1151

EXAR Monumental 6056B  
+ EXAR Guru 8719B  
+ EXAR Blackcap 9384

## ANGUS BULL

#HA Cowboy Up 5405

+ OSU Empress 8158

+ OSU Empress 1105

3F Epic 4631

Fwy 7008 of C085 4029

#EXAR Denver 2002B

+ V A R Blackcap 1059

HA Outside 3008

#HA Blackcap Lady 1602

#S A V Brilliance 8077

+ OSU Empress 8175

\$M
+52
\$W
+80
\$F
+114
\$G
+63
\$B
+177
\$C
+282

CED	BW	WW	YW	SC	DOC	MILK	MARB	RE	\$C
+10	+2.2	+85	+148	+60	+12	+22	+88	+70	+282

+10 CED (top 20%) while also ranking in the top 3% for both WW and YW EPDs!

• BW 80 lbs., ADJ. WW 607 lbs., ADJ. YW 1189 lbs., ACT. SC 34 cm.  
Ultrasound: ADJ. %IMF 4.01, ADJ. REA 13.4 sq. in.

## Full brothers sell as Lots 37 &amp; 38

36

## OSU Rolex 1164

CALVED: 3/2/21 • AAA: \*19987978 • TAT: 1164

+ Baldridge Colonel C251  
+ EXAR Rolex 8709B  
+ EXAR Royal Lass 1067

## ANGUS BULL

#HA Cowboy Up 5405

OSU Lady 8103

OSU Lady 0155

x + Baldridge Xpand X743

Baldridge Isabel Y69

#EXAR 263C

BR Royal Lass 19-132

HA Outside 3008

#HA Blackcap Lady 1602

#EXAR Titlelist T011

O S U Lady 4180

\$M
+68
\$W
+76
\$F
+98
\$G
+40
\$B
+138
\$C
+247

CED	BW	WW	YW	SC	DOC	MILK	MARB	RE	\$C
+4	+2.1	+67	+119	+40	+16	+32	+26	+88	+247

Robust bodied, thick made Rolex son!

• BW 82 lbs., ADJ. WW 782 lbs., ADJ. YW 1310 lbs., ACT. SC 36 cm.  
Ultrasound: ADJ. %IMF 4.29, ADJ. REA 14.4 sq. in.

38

## OSU Guru 1152

CALVED: 2/8/21 • AAA: +\*19972839 • TAT: 1152

EXAR Monumental 6056B  
+ EXAR Guru 8719B  
+ EXAR Blackcap 9384

## ANGUS BULL

#HA Cowboy Up 5405

+ OSU Empress 8158

+ OSU Empress 1105

3F Epic 4631

Fwy 7008 of C085 4029

#EXAR Denver 2002B

+ V A R Blackcap 1059

HA Outside 3008

#HA Blackcap Lady 1602

#S A V Brilliance 8077

+ OSU Empress 8175

\$M
+49
\$W
+75
\$F
+102
\$G
+50
\$B
+152
\$C
+246

CED	BW	WW	YW	SC	DOC	MILK	MARB	RE	\$C
+12	+0.6	+79	+139	+69	+12	+21	+56	+70	+246

Full brother to Lot 37 that is also recommended for heifers without giving up growth.

• BW 80 lbs., ADJ. WW 718 lbs., ADJ. YW 1304 lbs., ACT. SC 34 cm.  
Ultrasound: ADJ. %IMF 4.08, ADJ. REA 14.5 sq. in.







Sire of Lot 43 Basin Payweight Plus 6048

45

## OSU Intuition 1145

CALVED: 1/25/21 • AAA: \*19972834 • TAT: 1145

# + PVF Insight 0129  
**+C&C Intuition 7104**  
 + C&C Winnie 2048

## ANGUS BULL

# HA Cowboy Up 5405

**OSU Empress 8152**  
 + OSU Empress 1105

# S A V Brilliance 8077  
 + PVF Missie 790  
 Dameron First Class  
 + RAC Winnie 7456

# HA Outside 3008

# HA Blackcap Lady 1602  
 # S A V Brilliance 8077  
 + OSU Empress 8175

\$M
+64
\$W
+64
\$F
+97
\$G
+19
\$B
+116
\$C
+214

CED	BW	WW	YW	SC	DOC	MILK	MARB	RE	\$C
+3	+4.2	+79	+138	+1.74	+3	+19	-.05	+.55	+214

CED	BW	WW	YW	DMI	YH	SC	DOC	HP	CEM	MILK	MW	MH	CW	MARB	RE	FAT	TEND
45	65	3	10	66	24	3	85	26	81	76	3	9	22	96	47	27	56

Here is a son of a former ROV Show Bull of the Year that will sire heavy weight, good patterned calves.

\* BW 85 lbs., ADJ. WW 666 lbs., ADJ. YW 1234 lbs., ACT. SC 36 cm.

Ultrasound: ADJ. %IMF 3.76, ADJ. REA 13.4 sq. in.

43

## OSU Payweight Plus 1155

CALVED: 2/10/21 • AAA: +\*19981614 • TAT: 1155

# + Basin Payweight 1682  
**Basin Payweight Plus 6048**  
 + EXAR Royal Lass 2810

## ANGUS BULL

# + S A V Resource 1441

**+ OSU Empress 5102**  
 + OSU Empress 2114

# + Basin Payweight 006S  
 21AR O Lass 7017  
 # Connealy Consensus 7229  
 + EXAR Royal Lass 1067

# Rito 707 of Ideal 3407 7075

S A V Blackcap May 4136

# S A V Brilliance 8077

OSU Empress 6211

CED	BW	WW	YW	SC	DOC	MILK	MARB	RE	\$C
+4	+3.2	+86	+150	+2.44	+22	+30	-.09	+.98	+244

CED	BW	WW	YW	DMI	YH	SC	DOC	HP	CEM	MILK	MW	MH	CW	MARB	RE	FAT	TEND
73	77	5	4	98	36	1	14	18	90	44	6	38	3	97	4	17	13

Son of the popular and deceased Payweight Plus 6048 that is recommended on cows and will inject plenty of growth, ranking in the top 3% of non-parent Angus bulls for both WW and YW EPDs. He is also in the top 1% for Scrotal Circumference EPD. Full sister sells as Lot 12.

\* BW 83 lbs., ADJ. WW 553 lbs., ADJ. YW 1116 lbs., ACT. SC 35 cm.

Ultrasound: ADJ. %IMF 3.58, ADJ. REA 15.2 sq. in.

44

## OSU Growth Fund 1108

CALVED: 1/2/21 • AAA: \*19943017 • TAT: 1108

# + Basin Payweight 1682  
**+ Deer Valley Growth Fund**  
 + Deer Valley Rita 36113

## ANGUS BULL

OSU Final Answer 4225

**OSU Lady 8172**

OSU Lady 6108

# + Basin Payweight 006S  
 21AR O Lass 7017  
 # Plattemere Weigh Up K360  
 + Deer Valley Rita 9457

# S A V Final Answer 0035

OSU Jilt 2137

# + PVF Insight 0129

OSU Lady 0155

CED	BW	WW	YW	SC	DOC	MILK	MARB	RE	\$C
+11	-0.4	+70	+113	+1.35	+25	+31	+.39	+.34	+207

CED	BW	WW	YW	DMI	YH	SC	DOC	HP	CEM	MILK	MW	MH	CW	MARB	RE	FAT	TEND
47	40	11	67	47	70	16	17	8	2	38	40	58	55	61	85	100	40

Exceptional Growth Fund son that is recommended for heifers with a +11 CED and -0.4 BW EPD. His dam sells as Lot 15.

\* BW 62 lbs., ADJ. WW 686 lbs., ADJ. YW 1211 lbs., ACT. SC 35 cm.

Ultrasound: ADJ. %IMF 3.71, ADJ. REA 13.2 sq. in.

46

## OSU Stock Fund 1166

CALVED: 3/2/21 • AAA: +\*19992279 • TAT: 1166

# + Deer Valley Growth Fund  
**EXAR Stock Fund 9097B**  
 EXAR Empress 0875

## ANGUS BULL

# Barstow Cash

**OSU Empress 7148**  
 + OSU Empress 5102

# + Basin Payweight 1682  
 + Deer Valley Rita 36113  
 + G A R Prophet K243  
 EXAR Empress 2622

# Sitz Dash 10277

Barstow Queen W16

# + S A V Resource 1441

+ OSU Empress 2114

CED	BW	WW	YW	SC	DOC	MILK	MARB	RE	\$C
+7	+3.2	+98	+179	+.97	+23	+23	+.24	+1.02	+269

CED	BW	WW	YW	DMI	YH	SC	DOC	HP	CEM	MILK	MW	MH	CW	MARB	RE	FAT	TEND
49	76	1	1	100	8	35	13	78	22	80	1	7	1	88	5	25	45

This is an impressively powerful son of EXAR Stock Fund with equally impressive EPDs for growth traits, ranking in the top 1% of non-parent Angus bulls for WW, YW, and \$F as well as CW EPD.

\* BW 85 lbs., ADJ. WW 666 lbs., ADJ. YW 1234 lbs., ACT. SC 36 cm.

Ultrasound: ADJ. %IMF 3.76, ADJ. REA 13.4 sq. in.

47

## OSU Commercial 1127

CALVED: 1/8/21 • AAA: Non-registered • TAT: 1127

## ANGUS BULL

Lot 47 is a tested NH carrier and sells without a registration certificate.

\* BW 68 lbs., ADJ. WW 749 lbs., ADJ. YW 1338 lbs., ACT. SC 32 cm.

Ultrasound: ADJ. %IMF 3.62, ADJ. REA 13.4 sq. in.



## Angus Fall Long Yearling Bulls

lots 48-55



Lot 48 OSU Plus One 0222

Sire of Lot 48 E&amp;B Plus One

48

## OSU Plus One 0222

CALVED: 9/9/20 • AAA: +\*19818630 • TAT: 0222



#Connealy Confidence Plus

+ E&amp;B Plus One

# + E&amp;B Lady 1023 Precision 936

ANGUS BULL

#S A V Brilliance 8077

+ OSU Empress 1105

+ OSU Empress 8175

#Connealy Confidence 0100

Elbanna of Conanga 1209

# + E&amp;B 1680 Precision 1023

E&amp;B Lady 878 New Design 441

# + S A V Bismarck 5682

S A V Blackcap May 5270

#Stevenson Moneymaker R185

+ O S U Empress 4123



CED	BW	WW	YW	SC	DOC	MILK	MARB	RE	\$M
+9	+1.2	+50	+103	+.93	+15	+21	+.22	+.63	+59

CED	BW	WW	YW	DMI	YH	SC	DOC	HP	CEM	MILK	MW	MH	CW	MARB	RE	FAT	TEND
38	38	83	27	66	92	28	29	48	88	74	56	79	71	83	41	66	99

Exceptional E&B Plus One son chosen to be the lead off fall bull of this year's Cowboy Classic. This guy is impressive from every angle and has plenty of sheer power and mass. Should be safe for use on heifers.

• BW 80 lbs., ADJ. WW 669 lbs., ADJ. YW 1219 lbs., ACT. SC 38 cm.

Ultrasound: ADJ. %IMF 2.63, ADJ. REA 13.8 sq. in.

49

## OSU Power Play 0229

CALVED: 9/27/20 • AAA: +\*19854563 • TAT: 0229



# + Basin Payweight 1682

+ V A R Power Play 7018

+ Sandpoint Blackbird 8809

ANGUS BULL

#S A V Brilliance 8077

+ OSU Empress 1105

+ OSU Empress 8175



CED	BW	WW	YW	SC	DOC	MILK	MARB	RE	\$M
+4	+1.2	+62	+108	+.94	+20	+21	+.57	+.40	+62

CED	BW	WW	YW	DMI	YH	SC	DOC	HP	CEM	MILK	MW	MH	CW	MARB	RE	FAT	TEND
80	54	56	60	18	72	50	27	47	84	73	46	51	39	38	79	95	99

We had tremendous results with the use of Power Play 7018. This is evident by the pure stoutness and power of 0229!

• BW 77 lbs., ADJ. WW 727 lbs., ADJ. YW 1241 lbs., ACT. SC 36.5 cm.

Ultrasound: ADJ. %IMF 3.55, ADJ. REA 12.1 sq. in.







# FALL & SPRING YEARLING BULLS

hereford

## Hereford Fall Long Yearling & Spring Yearling Bulls

lots 56-61

56

### OSU Frontier 0324 {DLC,HYF,IEF,MSUDF}

CALVED: 9/19/20 • AHA: P44225771 • TAT: 0324 • Polled

TH 403A 475Z Pioneer 358C ET  
**TH Frontier 174E**  
FTF Trusting Lady 312A

HEREFORD BULL

NJW 98S Durango 44U {SOD}

**OSU Missy 5314**

OSU Missy 3320

TH 89T 755T Stockman 475Z  
TH 71U 17Y Rita 403A  
NJW 73S M326 Trust 100W ET {SOD,CHB}  
FTF Boom and Bloom 8211U

THM Durango 4037 {SOD}  
NJW 9126J Dew Domino 98S {DOD}  
DM BR Moler 803  
OSU 552 Missy 4301 {DOD}

\$BMI  
+358  
\$BII  
+434  
\$CHB  
+90

CED	BW	WW	YW	SC	MILK	M&G	REA	MARB
+2.3	+2.7	+70	+114	+0.9	+35	+70	+43	-.07

Calving ease fall long yearling Polled Hereford bull! The Frontier sons have been some of the most popular in many bull sales across the country. Tested DL carrier.

• BW 77 lbs., ADJ. WW 629 lbs., ADJ. YW 1208 lbs., ACT. SC 36 cm.  
Ultrasound: ADJ. %IMF 2.63, ADJ. REA 10.9 sq. in.

59

### OSU Blueprint 1309 {DLF,HYF,IEF,MSUDF}

CALVED: 2/10/21 • AHA: P44225304 • TAT: 1309 • Polled

R Leader 6964 {SOD}  
**Boyd 31Z Blueprint 6153**  
NJW 91H 100W Rita 31Z ET

HEREFORD BULL

KJ CJJ 618U Chevy 454Y

**OSU Missy 6307** {DOD}

OSU Missy 4313

Hyalite On Target 936 {SOD}  
R Miss Revolution 1009 {DOD}  
NJW 73S M326 Trust 100W ET {SOD,CHB}  
Remitall Rita 91H

KJ HVH 33N Redeem 485T ET {SOD}  
CJJ 163S Misty 618U  
SB BVM 23D Git-r-Done 111X ET  
OSU Missy 9300

\$BMI  
+392  
\$BII  
+471  
\$CHB  
+120

CED	BW	WW	YW	SC	MILK	M&G	REA	MARB
+7.5	+2.7	+67	+98	+1.8	+33	+67	+.68	+.05

One of my favorites in the offering and would be recommended for use on heifers. His dam is recognized as a Dam of Distinction by the American Hereford Association.

• BW 81 lbs., ADJ. WW 714 lbs., ADJ. YW 1196 lbs., ACT. SC 37 cm.  
Ultrasound: ADJ. %IMF 3.14, ADJ. REA 12.2 sq. in.

57

### OSU Blueprint 1300 {DLF,HYF,IEF,MSUDF}

CALVED: 1/9/21 • AHA: P44215513 • TAT: 1300 • Polled

R Leader 6964 {SOD}  
**Boyd 31Z Blueprint 6153**  
NJW 91H 100W Rita 31Z ET

HEREFORD BULL

SB BVM 23D Git-r-Done 111X ET

**OSU Missy 4313**

OSU Missy 9300

Hyalite On Target 936 {SOD}  
R Miss Revolution 1009 {DOD}  
NJW 73S M326 Trust 100W ET {SOD,CHB}  
Remitall Rita 91H

SB 122L Git-r-Done 19R ET {SOD}  
HVH Reba 23D  
NJW 1Y Wrangler 19D {SOD}  
OSU Missy 7305

\$BMI  
+329  
\$BII  
+387  
\$CHB  
+93

CED	BW	WW	YW	SC	MILK	M&G	REA	MARB
+11.0	+0.3	+50	+75	+0.8	+26	+51	+30	-.03

Big time calving ease Blueprint son! This guy ranks in the top 5% for CED and top 10% for BW.

• BW 85 lbs., ADJ. WW 624 lbs., ADJ. YW 1133 lbs., ACT. SC 37 cm.  
Ultrasound: ADJ. %IMF 2.63, ADJ. REA 12.3 sq. in.

60

### OSU Validated 1315 {DLF,HYF,IEF,MSUDE,MDP}

CALVED: 2/20/21 • AHA: P44225311 • TAT: 1315 • Homo. Polled

EFBeef TFL U208 Tested X651 ET {SOD,CHB}  
**EFBeef BR Validated B413** {CHB}  
EFBeef 4R Thyra Y865

HEREFORD BULL

NJW 73S W18 Hometown 10Y ET {CHB,SOD}

**OSU Missy 5307**

OSU Missy 2300

EFBeef Foremost U208 {SOD,CHB}  
EFBeef P606 Mabel R415  
MSU TCF Revolution 4R {SOD}  
EFBeef N014 Thyra S645 {DOD}

SHF Wonder M326 W18 ET {CHB,SOD}  
NJW P606 72N Daydream 73S  
MSU TCF Revolution 4R {SOD}  
OSU Missy 8323

\$BMI  
+432  
\$BII  
+551  
\$CHB  
+177

CED	BW	WW	YW	SC	MILK	M&G	REA	MARB
+9.8	+0.3	+53	+78	+1.2	+23	+49	+.68	+.85

A younger Validated son that is impressive for how long and dimensional he is. Also a standout for being homozygous polled and ranking in the top 1% for \$CHB! Potential MD carrier.

• BW 81 lbs., ADJ. WW 651 lbs., ADJ. YW 1217 lbs., ACT. SC 35 cm.  
Ultrasound: ADJ. %IMF 4.04, ADJ. REA 14.9 sq. in.

58

### OSU Blueprint 1305 {DLF,HYF,IEF,MSUDF}

CALVED: 1/14/21 • AHA: P44215531 • TAT: 1305 • Polled

R Leader 6964 {SOD}  
**Boyd 31Z Blueprint 6153**  
NJW 91H 100W Rita 31Z ET

HEREFORD BULL

H2 11X 4130 Successor 2504 ET

**OSU Missy 8314**

OSU Missy 3313

Hyalite On Target 936 {SOD}  
R Miss Revolution 1009 {DOD}  
NJW 73S M326 Trust 100W ET {SOD,CHB}  
Remitall Rita 91H

TH 71U 719T Mr Hereford 11X {SOD}  
DM BR Ariel 4130 ET  
DM BR Moler 803  
OSU Missy 9303

\$BMI  
+369  
\$BII  
+417  
\$CHB  
+90

CED	BW	WW	YW	SC	MILK	M&G	REA	MARB
+6.9	+1.0	+49	+71	+1.1	+27	+51	+35	-.17

Another calving ease specialist sired by Blueprint that is also moderate and thick.

• BW 80 lbs., ADJ. WW 616 lbs., ADJ. YW 1069 lbs., ACT. SC 36 cm.  
Ultrasound: ADJ. %IMF 3.17, ADJ. REA 13.4 sq. in.

61

### OSU Blueprint 1317 {DLF,HYF,IEF,MSUDF}

CALVED: 3/14/21 • AHA: P44239777 • TAT: 1317 • Polled

R Leader 6964 {SOD}  
**Boyd 31Z Blueprint 6153**  
NJW 91H 100W Rita 31Z ET

HEREFORD BULL

NJW 73S M326 Trust 100W ET {SOD,CHB}

**OSU Missy 4315**

OSU Missy 1322

Hyalite On Target 936 {SOD}  
R Miss Revolution 1009 {DOD}  
NJW 73S M326 Trust 100W ET {SOD,CHB}  
Remitall Rita 91H

KCF Bennett 3008 M326 {CHB,SOD}  
NJW P606 72N Daydream 73S  
MSU TCF Revolution 4R {SOD}  
OSU 492D Missy 0501

\$BMI  
+418  
\$BII  
+486  
\$CHB  
+128

CED	BW	WW	YW	SC	MILK	M&G	REA	MARB
+5.8	+2.3	+62	+105	+1.4	+34	+65	+.77	-.04

Here is a March Blueprint son that is impressive for stoutness and power with exceptional growth! He is recommended for use on heifers and should produce a really nice set of replacement daughters.

• BW 86 lbs., ADJ. WW 658 lbs., ADJ. YW 1264 lbs., ACT. SC 34 cm.  
Ultrasound: ADJ. %IMF 3.94, ADJ. REA 15.9 sq. in.





# Simmental Spring Yearling Bull

lot 62

62



**OSU County O 1601J**

CALVED: 1/14/21 • ASA: 3862002 • TAT: 1601J • Polled PB

W/C Loaded Up 1119Y

**GEFF County O**

Ruby NFF Rhythm 475B

**SIMMENTAL BULL**

W/C Loaded Up 1119Y

**OSU Lass 8601F**

OSU Lass 6601D

Remington Lock n Load54U

Aubreys Black Blaze III

AJE/PB Montecito 63W

Rhythm 418P

Remington Lock n Load54U

Aubreys Black Blaze III

HPF Quantum Leap Z952

OSU Lass 3600

\$API

+114

\$TI

+74



Sire of Lot 62 GEFF County O

CED	BW	WW	YW	MILK	MWW	STAY	MARB	REA
+6.8	+3.2	+82	+121	+22	+63	+16	-.04	+1.00

Black polled purebred Simmental bull sired by the popular County O.

• BW 90 lbs., ADJ. WW 658 lbs., ADJ. YW 1264 lbs., ACT. SC 34 cm.

Ultrasound: ADJ. %IMF 3.94, ADJ. REA 15.9 sq. in.

## Commercial Pairs

lots 101-110

### NEW THIS YEAR: Selling 10 Black Baldy First-calf Heifer Pairs

These heifers will sell in groups of three or four head.

Calves at side are sired by a low birth weight Angus bull, PF Bomber 8563 of EF (AAA 19204406).

## How to Bid Online

### STEP 1 - CREATE AN ACCOUNT and REQUESTING BIDDING CREDENTIALS

You can always view an auction without signing in. You must only sign in if you plan to bid on cattle. If you plan to bid on livestock, you must CREATE A NEW ACCOUNT and then request for bidding credentials at [cci.live](http://cci.live). Once you are approved the first time, you do not need to go through the process for each sale. Please DO NOT wait until sale day to request bidding credentials, as some sales require approval more than one day ahead of time. Some sales also require a "bidder passcode" from the sale management for that auction. When you create an account, please use a valid email address. If in the future you forget your bidder's password, you can reset it immediately through the email on your account.

### STEP 2 - GET A BUYER NUMBER

Once you are an approved bidder at CCI, you simply go to the SALE SCHEDULE PAGE and click on the auction name that you are interested in, then click BID ONLINE and click GET BUYER NUMBER. You will instantly be assigned a buyer number for that auction. Some sales also require a "bidder passcode" from the sale management for that auction. When you click "get buyer number," you will be instructed to enter the passcode from the sale management for that auction.

**STEP 3** - Always refresh your screen if you are going in and out of service and if you "leave" your computer or the app for more than 15 minutes. The computer may log you out if you have not been active for a period of time. It's always a good idea to refresh your screen right before the sale starts. Driving while bidding is not recommended!

### BIDDING and SCREEN PRICE—VERY IMPORTANT!!!!

**Please note that the asking price on the screen is REAL TIME!** Screen or asking price takes precedence over audio and voice! This means that if you have a slow internet connection the auctioneer may be a few seconds behind the screen price that is showing. The screen price is the asking bid at the auction and there is no delay, so you can bid with confidence by watching only the screen asking price. If you have a slow internet connection, we recommend that you turn off the audio and only watch the asking price box. The audio and video are for entertainment purposes only. You can also phone in to place your bids if you feel that your internet connection is not acceptable.

Always **refresh your screen periodically**, especially if you move in and out of service.

Always **refresh your device** if you have left it for more than 20 minutes or return to the app after leaving it.

### IF I FORGET MY PASSWORD

If you forget your password, simply click on FORGOT PASSWORD and CCI will email a reset password link to your email inbox.



**CCI.live**  
**Bid Live Online**

(516) 366-0734 CCI.live.schedule@cci.live

"Gavel's Down, The Best!"



## OSU ANIMAL SCIENCE MAJOR SPONSORS

*Thank You!*

## MAJOR SPONSORS

*of the OSU Department of Animal Science*

**Are you looking for strong, healthy calves? To stop scours in newborn calves? Healthier cattle?**



Chelated minerals are between 1.8 to 5.8 times more bioavailable (depending on the mineral) & Mannanoligosaccharides will help to reduce bacterial scours in calves.

Call to find out more! Maximize profits, stop scours, increase conception and improve feed efficiency.

**(800) 697-1998**

**Johnsons**  
OF KINGFISHER INC.



1801 South Main Street • Kingfisher, OK • (405) 375-5718

[www.johnsonsofkingfisher.com](http://www.johnsonsofkingfisher.com)

Same Name...Same Family... Since 1927

**MAJOR SPONSOR OF OSU ANIMAL SCIENCE**

**MASTERHAND  
MILLING**



[MASTERHANDMILLING.COM](http://MASTERHANDMILLING.COM)

**The Brand That Works For You**



Cord McCoy - McCoy Ranch

[GPWorksForMe.com](http://GPWorksForMe.com)

Great Plains Kubota  
Oklahoma's Full-Line Kubota Dealer  
Ada/Duncan/Edmond/Shawnee  
855-4KUBOTA • [GPKUBOTA.COM](http://GPKUBOTA.COM)



Quality Livestock Equipment since 1961



Major Sponsor of  
**OSU Animal Science**



Distributing these quality brands and many more.

For more information please call 800.364.1605 or [zeitlow.com](http://zeitlow.com)

**warrencat.com**  
**866.2WARREN**



**YOUR DEALERSHIP OF CHOICE**





# OSU ANIMAL SCIENCE MAJOR SPONSORS



**Banamine® Transdermal**  
(flunixin transdermal solution)

**New Banamine® Transdermal.**  
The ease of a pour-on.

Copyright © Intervet Inc., d/b/a Merck Animal Health, a subsidiary of Merck & Co., Inc. All rights reserved.

**MERCK**  
Animal Health

**GOBOB**  
PIPE & STEEL

**CORRAL & FENCING MATERIALS**

**CATTLE WORKING EQUIPMENT**

**HAY TRAILERS**

**HAY FEEDERS**

**844-300-6066 GoBob.com**

**Diamond w Corrals**

**MANUFACTURING PORTABLE EQUIPMENT**

**WHEEL CORRAL**      **SORTING SYSTEM**  
**HOG TRAP**      **THE WING**  
**CHUTE, ALLEY & TUB SYSTEM**

**580-596-3381**      **www.diamondwcorrals.com**

**Kubota**

**Everything You Need, For Anything You Need To Do.**

Kubota's full line of hardworking equipment has a proven reputation for high-quality engineering, versatility, power and reliability.

**KubotaUSA.com**

**Kubota**

© Kubota Tractor Corporation, 2018

**Pfeiffer FARMS**

*Proud Supporters of The OSU ANS? Department*

JERRY, ADA, KELSEY, KASS, & KARISA  
ORLANDO, OK • PFEIFFER-FARMS.COM  
JERRY 580-370-1948 KELSEY 580-370-3154

**SHOW·RITE®**

Find your local dealer at **WWW.SHOWWRITE.COM**

Part of the **Altech®** Feed Division

**PK EQUIPMENT** | **JOHN DEERE**

WE'RE PROUD TO BE A MAJOR SPONSOR OF THE  
**OKLAHOMA STATE UNIVERSITY ANIMAL SCIENCE PROGRAM**

**PKEQUIPMENT.COM**

Proud to support past, present and future cattlemen and women through OSU Animal Science.

**your FIRST CHOICE for FREE CHOICE SUPPLEMENTATION** ★★ ★

Delivering the right product at the right time to achieve health, production and efficiency goals.

Brian Fieser, Ph.D.  
Stillwater, OK • 405-269-9143

**AMPT** | **Moor-Mans** | **MINTRATE** | **ADM**

**866-666-7626 • ADMAAnimalNutrition.com/Beef**





## OSU ANIMAL SCIENCE MAJOR SPONSORS



Major Sponsor of  
OSU Department of Animal Science



**RALCO**  
**SHOW**  
**FEED THE DIFFERENCE**

**Priefert®**  
**Ranch Equipment**

Proud Sponsor of OSU Animal Science

**A&M**  
**FEEDS**

Authorized Dealer  
(800) 364-6804  
502 East 6th - Stillwater, OK



**PROGRESSIVE**  
**CATTLEMEN**  
RELY ON VITAFERM® CONCEPT-AID®

DON'T FORGET ABOUT  
THE OTHER HALF  
OF THE EQUATION

Maverick Squires • (405) 234-0965

**VITAFERM** PERFORMANCE THAT PAYS



GET YOUR  
WORK DONE,  
**OKLAHOMA**  
Mahindra

**Salvgrass**  
Equipment  
405-533-1992

PUSH MORE. PULL MORE. LIFT MORE.

OKLAHOMA  
BEEF  
COUNCIL  
**BEEF**



BRUCE BUTLER, OWNER • 816 284 2518  
TEAM MEMBER OF THE 1981 NATIONAL CHAMPION  
LIVESTOCK JUDGING TEAM



TROY BAUMGARDNER, OSU ALUMNI  
ESP OKLAHOMA DISTRIBUTOR  
580 541 2513

ESP — PROUD SPONSOR OF OSU ANIMAL SCIENCE DEPARTMENT





# OSU TERMS & CONDITIONS OF SALE



UNLESS OTHERWISE EXPRESSLY STATED IN THESE SALE TERMS AND CONDITIONS OR ANY OTHER WRITTEN AGREEMENT BETWEEN THE PARTIES RELATING TO THE SALE OF CATTLE UNDER THESE SALE TERMS AND CONDITIONS, OKLAHOMA STATE UNIVERSITY (OSU) MAKES NO OTHER WARRANTIES, EXPRESS OR IMPLIED, INCLUDING ANY IMPLIED WARRANTY OF MERCHANTABILITY OR FITNESS FOR A PARTICULAR PURPOSE, EVEN IF SUCH PURPOSE IS KNOWN TO THE PARTIES.

THE REMEDIES PROVIDED IN THESE SALE TERMS AND CONDITIONS ARE THE EXCLUSIVE REMEDIES OF THE BUYER, OR ANY PARTY CLAIMING THROUGH THE BUYER, AND UNDER NO CIRCUMSTANCES WILL OSU BE LIABLE FOR ANY INCIDENTAL, INDIRECT, SPECIAL, CONSEQUENTIAL, PUNITIVE OR EXEMPLARY DAMAGES UNDER ANY INDEMNITY PROVISION OR OTHERWISE.

## TERMS OF SALE

**Bidding:** Each animal will be sold to the highest bidder. The auctioneer in charge will settle any disputes as to bids, and his decision on such matters will be final.

**Announcements:** If there is any inconsistency in the terms of this sale book, the supplement sheet or day-of-sale announcement, (i) the day-of-sale announcement will control over both the supplement sheet and the sale book, and (ii) the supplement sheet will control over the sale book.

**Cash Sale:** All sales are for cash unless satisfactory credit arrangements, including any possible reservation of security interest by the vendor, have been made with the vendor prior to sale.

**OSU Bursar's Office Policy and Procedures:** There will be a finance charge computed at a periodic monthly rate of 1.5% per month, or an APR of 19.56%, on any unpaid balance. All accounts with an unpaid balance will be assessed a minimum finance charge of \$.50 per month. Bursar accounts are assessed a finance charge after 30 days past the due date on any remaining unpaid balance that has been billed.

**Buyer's risk:** The risk of loss and injury of each animal passes to the buyer as soon as it is sold, but it is the obligation of OSU to ensure that animals are fed and cared for free of charge to the buyer until loaded for shipment or until the expiration of 48 hours after the sale, whichever occurs sooner.

## Identification:

1. OSU must ensure that each animal has a readable permanent identification mark (e.g., tattoo, hot-iron brand or freeze brand) corresponding to its registration.
2. The buyer must check all permanent identification marks for accuracy.
3. In those cases where a nickname is used by OSU, the nickname must also be accompanied by the official registered name and number of the animal.

**Certificate of registration:** A transferred certificate of registration must be furnished by OSU free of charge to the buyer for each animal within 45 days following the later of the date of sale and receipt of full payment.

**Artificial insemination (AI) service certificates:** Upon the buyer's request, AI Service Certificates must be furnished by OSU free of charge to the buyer for all females bred artificially to bulls not owned by OSU.

## GUARANTEES

**Health:** Unless otherwise announced, OSU guarantees that all animals are eligible for interstate shipment as required by federal regulations.

## Conformance with registration:

1. OSU guarantees that unless noted otherwise, all animals are registered under the rules of their respective breed association.
2. OSU guarantees to the buyer that all animals conform to the registration certificate as entered in the Herd Book of either the American Angus Association, American Hereford Association, American Simmental Association or International Brangus Breeders Association.

## Pedigree:

1. OSU guarantees to the buyer that the pedigree, performance data and individual genetic defect designation of the animal, as represented in any sales materials (including any sale book, supplement sheet or day-of-sale announcement), is accurate.
2. The absence of any such designation on the pedigree of an animal, in a sale book, does not establish that the animal in question is not a carrier of any such genetic defect or genetic factor.
3. In those cases where a commonly understood nickname is used by OSU, OSU guarantees the pedigree of the animal based on the commonly understood nickname.

**Sex:** Unless otherwise represented by OSU, there are no guarantees that offspring will be of a particular sex.

## Breeding guarantees:

1. OSU guarantees that all bulls are breeders, but only if such bulls are at least 12 months old at the time of sale and have not been allowed to run with the herd until at least 14 months of age. A bull that settles a cow by natural service and passes a fertility test made by competent veterinarians mutually agreed upon by the buyer and OSU, during any six-month period of trial (provided for in paragraph 2 of the section entitled "Options and privileges of return or adjustment") will be considered a breeder. Unless otherwise agreed by the buyer and OSU, OSU makes no guarantees with respect to the ability to freeze semen.
2. OSU guarantees that all animals are breeders, with the exception of: (a) calves under 12 months of age at the time of the sale; (b) animals shown after the sale has occurred (in such cases, the breeding guarantees, if any, will be those guarantees as are agreed upon between OSU and the buyer); (c) injury or disease occurring after the sale; and (d) gross negligence or willful misconduct on the part of the buyer.
3. "Safe-in-calf" females are guaranteed by OSU to have been examined by a competent veterinarian and determined to be in calf.
4. "Served" females are not guaranteed to be in calf.
5. "Pasture bred" females have been exposed but are not guaranteed to be in calf.
6. "Open" females have not been served and are guaranteed by OSU to be without calf.
7. Donor females:
  - a. Unless otherwise agreed by the buyer and OSU, a female that has been used in an embryo transfer program is not guaranteed to be a breeder after the date of the sale.

b. Unless otherwise agreed by the buyer and OSU, a female is not guaranteed to be a breeder after the date of the sale, when that female is to be used, or attempted to be used, in an embryo transfer program.

8. OSU makes the following guarantees with respect to all "pregnant recipients": (i) that the female is pregnant, (ii) that the resulting calf is of the pedigree represented, and (iii) that the resulting calf is of the sex represented (if so represented).

**Semen:** Unless otherwise agreed by the buyer and OSU, with respect to the sale of semen OSU makes no guarantees with respect to the performance or characteristics of such semen and the buyer is purchasing such semen "as is."

**Embryos:** Unless otherwise agreed by the buyer and OSU, with respect to the sale of embryos OSU makes no guarantees with respect to the performance or characteristics of such embryos and the buyer is purchasing such embryos "as is."

## Options and privileges of return or adjustment:

1. Except as provided in paragraph 2 of this section, all claims for adjustment or refund must be made in writing on or before the later of (i) six months after the sale date and (ii) the date on which the animal reaches 30 months of age.
  2. All claims relating to the misrepresentation of service sire and all claims relating to paragraphs 10 and 11 of this section must be made in writing on or before the second anniversary of the date of sale.
  3. If an animal is claimed to be a non-breeder, the animal may be returned to OSU if in good condition and complying with the health requirements of Oklahoma. OSU is entitled to six months trial following the return of the animal in which to prove that the animal is a breeder. If at the end of the six-month period OSU is unable to prove the animal is a breeder, OSU must, at the option of the buyer, replace the animal with another of equal value or refund the purchase price. The return of the full purchase price will be deemed full satisfaction and settlement. Any expense incurred for transporting an animal claimed to be a non-breeder will be the responsibility of the buyer, except that OSU will be responsible for transportation costs in excess of the distance between the buyer's farm and the location where the sale took place. If OSU proves the animal to be a breeder, it will be the obligation of the buyer to take delivery of the animal and pay all transportation expenses.
  4. If a female sold as "safe in calf" proves not to be in calf, the buyer may receive service from the bull previously used, if available. If the bull is not available, OSU must make a satisfactory adjustment on the purchase price to the buyer or, at the buyer's option, refund the purchase price upon return of the animal to OSU. Any adjustment provided for in this paragraph will absolve OSU from further liability, except in if such female proves to be a non-breeder. If a female represented as "safe in calf" to a certain bull at the time of sale proves to have been bred to a different bull, OSU must make a satisfactory adjustment on the purchase price to the buyer or, at the buyer's option, refund the purchase price upon return of the animal to OSU (adjustments will not be considered to be a breeding fee or an allocation of the purchase price to any unborn calf).
  5. If a female sold as "open" proves to be with calf, the buyer may return the animal to OSU prior to calving for a refund of the full purchase price or for another animal of equal value, whichever is acceptable to the buyer. OSU is responsible for all transportation expenses.
  6. Cows with calves at their side are presumed to be breeders with no further fertility guarantee.
  7. White skin or hair on Angus cattle must not be painted or altered. If such painting or alteration has occurred, the buyer may return the animal to OSU for a refund of the full purchase price or for another animal of equal value, whichever is acceptable to the buyer.
  8. If an animal (including the offspring of a pregnant recipient) is sold and at a later date proves not to have been eligible for registration under the rules of its respective breed association, OSU must make a satisfactory adjustment on the purchase price to the buyer, or at the option of the buyer, refund the purchase price upon the return of the animal to OSU.
  9. If (i) an animal is sold (including the offspring of a pregnant recipient) and through DNA-marker-typing is proven to have incorrect parentage, as represented by the certificate of registration, and for which parentage can be determined, or (ii) the resulting calf of a pregnant recipient is not of the sex represented, OSU is obligated to make a satisfactory adjustment on the purchase price to the buyer or, at the buyer's option, refund the purchase price upon the return of the animal to OSU.
  10. Except as provided in paragraphs 4 and 6 of this section, all transportation expenses incurred will be the responsibility of the buyer.
- Retention of genetic material:** Unless otherwise agreed in writing by OSU and the buyer, OSU will not retain any genetic material of any animal for the purpose of cloning. A 1/3 semen interest is retained in all service-age bulls.

## DISCLOSURE OF TEST RESULTS FOR KNOWN GENETIC DEFECTS AND FACTORS

OSU shall have an affirmative duty to notify the buyer of any test results for genetic defects or genetic factors not otherwise reflected on an animal's pedigree.

## Optional Guarantee—Genetic Defects:

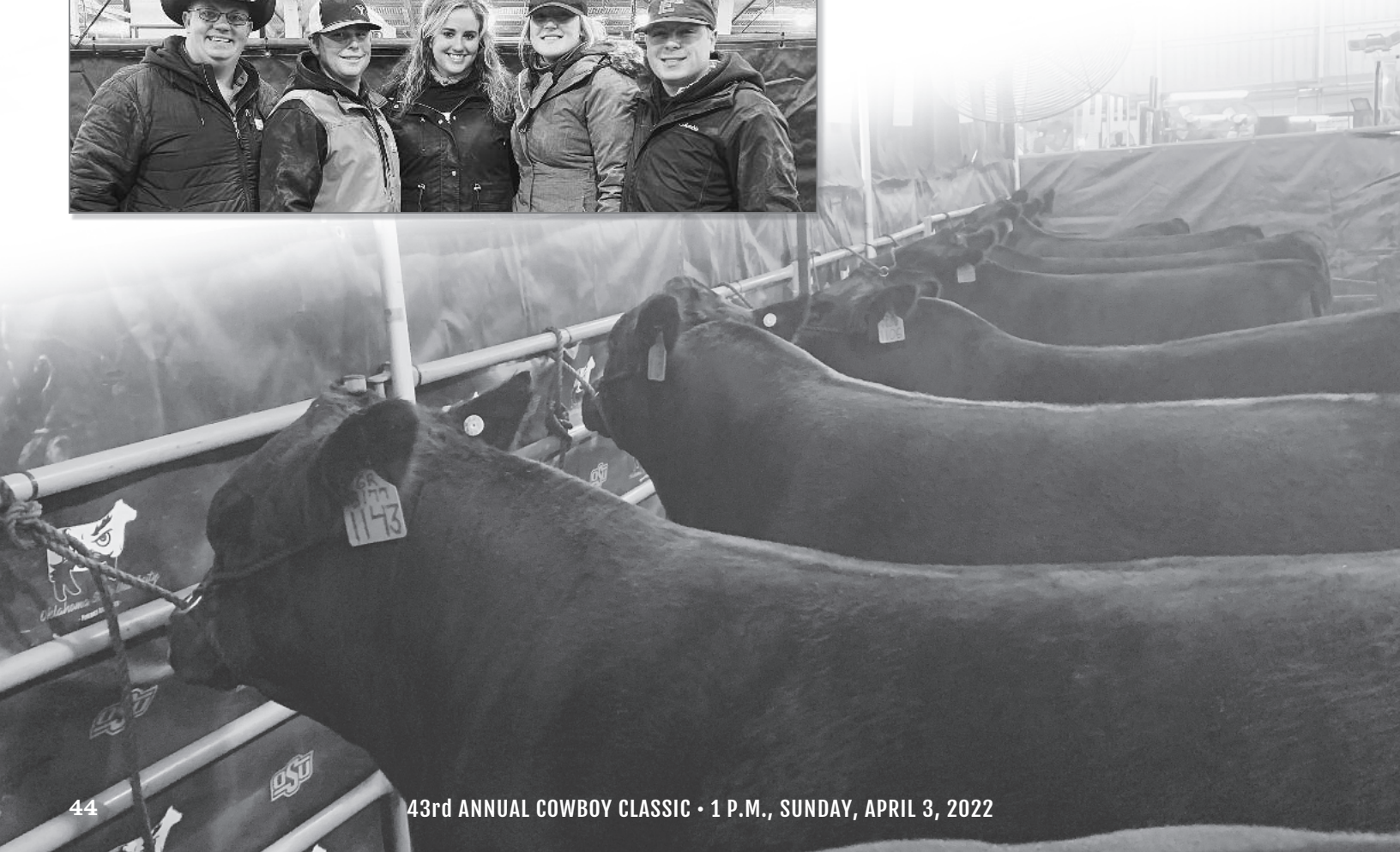
1. The buyer and seller may determine the scope and duration of a guarantee, if any, on an individual basis. OSU may, but is not required to, provide a guarantee to the buyer relating to genetic defects.
2. Nothing contained herein should be construed to relieve the parties from complying fully with all the rules and policies of the respective breed association relating to genetic defects generally or individually.

## MISCELLANEOUS

1. The above terms and conditions of sale constitute a contract between the buyer of each animal and OSU and are equally binding upon both parties. Each sale or resale of an animal constitutes a separate transaction.
2. Neither Oklahoma State University, the sale coordinator nor any other person connected with the management of the sale assumes any liability, legal or otherwise.
3. These sale terms and conditions and all rights, obligations and duties arising hereunder and all disputes arising hereunder will be construed in accordance with, and governed by, the laws of the State of Oklahoma, without giving effect to such state's choice of law rules.

*For voluntary consideration and use by sellers in their independent business judgment.*









lot 6

**OSU Lady 0114**



lot 10

**OSU Empress 0146**



lot 12

**OSU Blackcap 7180**



lot 20

**OSU Empress 1209**



lot 22A

**OSU Bardolena 1220**



lot 22B

**OSU Bardolena 1223**



lot 26

**OSU Power Play 1104**



lot 31

**OSU Grenade 1161**



lot 33

**OSU Rolex 1102**



*Thank You to the OSU PBC student employees!*

**Students employed by the OSU Purebred Beef Center during the 2021–2022 school year...**

L–R: Riley Smith, Macomb, IL; Tristian Crick, Shelbyville, TN; Ryland Dewar, Woodland, CA; Derek Strawn, Columbia, MO; Emma Grace Nowotny, New Braunfels, TX; Brooke Riggins, Olney, TX; Jake Pearl, Bainbridge, IN; Charlie Rosson, Louisa, VA; Evan Epenscheid, Marshalltown, IA; Justin Cozzi, Dos Palos, CA. Not pictured: Kenzie Grimm, South Charleston, OH.





**PUREBRED BEEF CATTLE CENTER**

109 Animal Science  
Stillwater, OK 74078-6051

PRE-SORTED  
FIRST CLASS  
U.S. POSTAGE  
PAID  
SLATE GROUP

**FIRST CLASS MAIL**

TIME SENSITIVE...PLEASE DO NOT DELAY

# 43rd Annual Cowboy Classic

*Sunday, April 3rd*

ANGUS | HEREFORD | SIMMENTAL

**23 FEMALE LOTS + 39 READY-FOR-SERVICE BULLS**

Also selling 10 commercial first-calf heifer pairs

Online bidding & videos:



*lot 24*